

5TH
Edition



Biofit FOSTERING
INNOVATION
& TRANSFER
LILLE **2016** - FRANCE

A 360° approach to source
early stage innovations in Life Sciences

30th Nov. and 1st Dec. 2016



BACK IN
LILLE

FRANCE

Organised by:



In collaboration with:



What is BioFIT?

BioFIT is the leading partnering event in Europe for **tech transfer, academia-industry collaborations and for sourcing early-stage innovations** stemming from academia, startups and SMEs of the **Life Sciences field**.

Who will you meet?



=

The best mix of attendees to source licensing deals and research collaborations

BioFIT features

- ✓ **One-to-one partnering meetings**
- ✓ **Conferences and roundtable discussions**
- ✓ **Presentation Sessions**
- ✓ **Exhibition**

An optimal partnering event



1,300
Participants



50%
International actors

The BioFIT partnering system is the most efficient way to identify the best contacts for your collaborative projects.

Partnering at BioFIT is powered by:

partneringONE[®]
a product of **EBD** GROUP



48 hours

to meet your future project partners and accelerate innovation

A 360° approach to build life sciences partnerships



Identify

today's innovative technologies and licensing opportunities



Benefit

from a wide-range of attendees
(Pharmas / Biotechs / TTOs /
Academics / Investors)



Meet

the most qualified actors in the
Life Sciences field



Develop

new collaborations

Conferences and roundtable discussions

For this 5th edition, BioFIT proposes a varied and rich programme:

PLENARY SESSION

« Is Europe competitive enough in Life Sciences innovation? »



Best practices in collaborative research

- How can industry and investor incubating models accelerate research translation?

Track 1

- How can deal-making process be accelerated by standard contracts and conditions?



Key issues in licensing and tech transfer

- What is the best background for an academic spin-off CEO?

- Are universities a short-term or long-term partner for spin-offs?

Track 2

- To spin or not to spin?



Early stage innovation: Identify the right funding sources

- Committed to the VC business: Why and how universities take part in new venture funds?

- Lessons learned: Dos & don'ts from seasoned entrepreneurs

- Does the European seed market exist?

Track 3

- How to spark VCs interest in your company for Series A financing?

- How can former successful entrepreneurs become involved and support today's life sciences start-ups?

They will share their experience:

 Michèle Ollier, Partner,
INDEX VENTURES

 Sam Fazeli, Head of
BLOOMBERG INTELLIGENCE

 Stefan L. Nilsson, CEO,
LIPIGON

 Paul Ashley, Deputy Head of Tech
Transfer, ISIS INNOVATION

 Kai Simons, CEO,
Lipotype and Director Emeritus of
THE MAX PLANCK INSTITUTE CBG

80%
International
speakers

60
High-level
speakers

 Tzachy Tal, Director BD,
TECHNION

 Ron Newbold,
VP External R&D Innovation,
PFIZER WORLDWIDE
RESEARCH & DEVELOPMENT

Presentation Sessions

Present your project in front of pharmas, biotechs, TTOs and VCs and find partners who share your vision.

Scientific Slams*

For academic researchers to present their innovative early-stage R&D project:

- Exhibit a poster describing your R&D project on the exhibition area
- Get feedback and advice from an expert jury
- Meet potential partners and investors



Apply

Spin off Slams*

For young emerging academic spin-off companies (less than three years old) to present their global strategy:

- Enhance your visibility with a dedicated meeting space at the exhibition area
- Get feedback and advice from an expert jury
- Meet potential partners and investors



Be selected

Licensing Opportunity Presentations*

For TTOs or related structures to present "ready to be licensed" technology:

- Exhibit a poster describing the technology within the exhibition area
- Present the technology to potential partners and investors who could support the technology



Pitch

* Additional fees apply

Boost your visibility

After four editions, BioFIT has reached the status of European leading event for tech transfer and collaborative research in Life Sciences.

BioFIT takes place alternatively in Lille and in Strasbourg.

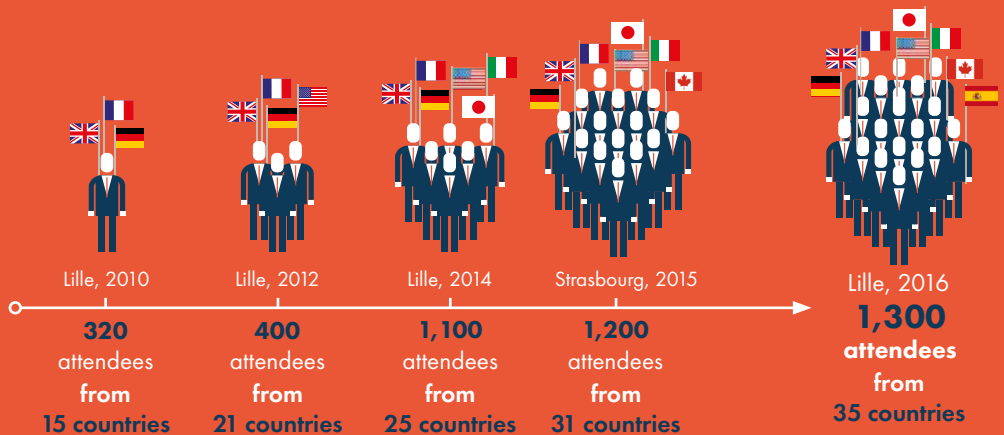


Exhibit at BioFIT 2016

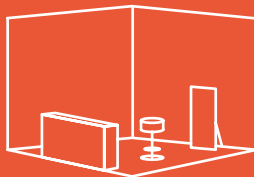
As an Exhibitor, you will gain high visibility with the top leaders in the Life Sciences field.

6 m² equipped booth € 2,200*

9 m² equipped booth € 3,300*

12 m² equipped booth ... € 4,400*

18 m² equipped booth ... € 6,600*



*excl.VAT

Sponsorship opportunities

Discover our sponsorship opportunities and maximise your presence:



Gold Sponsor
€ 15,000*



Silver Sponsor
€ 9,000*



Bronze Sponsor
€ 6,000*

There are many additional opportunities including:



Website banner:From € 2,000*
Bag insert:From € 2,500*
Advertisement in BioFIT printed document:From € 2,500*
Networking evening (BioParty):..... € 10,000*

Please find more information on our website or contact us.

*excl.VAT

Register now for BioFIT 2016

Registration fees (excl. VAT)

	Full price	Early bird before 30 th June 2016
Mature company (> 3 years old)	€ 1,199	€ 959
TTO / Research Institute / Cluster / Association	€ 1,019	€ 816
Emerging company (≤ 3 years old) or SME (≤ 5 employees)	€ 479	€ 384
Academic scientist	€ 399	€ 319

www.biofit-event.com



Contact:

Margaux SATOLA
Business Development Manager
msatola@eurasante.com
+33 (0)3 59 39 01 82



Event venue:

Lille Grand Palais
1 Boulevard des Citées Unies
59777 Lille
France

Supported by:

