

PROGRAMME



Biofit FOSTERING
INNOVATION
& TRANSFER

The leading European partnering event
for early-stage deals and investment
rounds in the field of Life Sciences

7TH
edition

DECEMBER
4TH & 5TH
2018

LILLE
France

www.biofit-event.com

 @BIOFIT_EVENT

With the highest attending rate of academics, TTOs and research institutions, BioFIT is the place where **academia-industry collaborations** get started. BioFIT has taken on a whole new dimension becoming the meeting point in Europe for **tech transfer** and for **sourcing early-stage innovations** stemming from public research institutions, academic spin-offs and emerging biotech companies. Together with big pharma, biotech and diagnostic companies, BioFIT operates as a platform to **build partnerships for all public and private actors**. BioFIT is also the **European marketplace for pre-seed, seed and Series A investment in Life Sciences**.

BioFIT 2018 Key Figures:



BioFIT is organised by:



WELCOME

«BioFIT has emerged as the leading partnering event in Europe to source early-stage innovations and collaborative research capacities in Life Sciences, and also to obtain funding for seed rounds. Today, we are very pleased to welcome you in Lille for this 7th edition and glad to announce that BioFIT will be organised alternately in Marseille (2019), in Strasbourg (2020) and in Lille (2021). This unique partnership between these 3 French ecosystems will enable BioFIT audience to enjoy both a new venue and a new destination.

Drawing on the strengths and assets of each territory in which BioFIT is now based, the event is strengthening its position as a leading partnering event in Europe, and thus, better provides you a complete framework for exchanges that can intensify your interactions and significantly increase partnerships and funding opportunities for the development of your projects.

We hope that you will take full part in all the activities of this pivotal edition and that we will meet you next year in Marseille on December 10th and 11th, 2019 and then in Strasbourg in December 2020, for even more meetings, deals and discoveries of early-stage innovations in Life Sciences!»



Etienne Vervaecke
General Manager of Eurasanté and the NHL Cluster



Emilie Royere
General Manager of Eurobiomed



Marco Pintore
General Manager of BioValley France

Institutional partners:



STEERING COMMITTEE

PHARMA, BIOTECH

Maria Bobadilla
SENIOR DIRECTOR, EXTENDING INNOVATION NETWORK,
ROCHE 🇫🇷

Adrian Carter
CORPORATE VICE PRESIDENT AND GLOBAL HEAD OF DISCOVERY RESEARCH COORDINATION,
BOEHRINGER INGELHEIM 🇩🇪

Sami Chtourou
EXECUTIVE VICE PRESIDENT INNOVATION & SCIENTIFIC AFFAIRS, **LFB** 🇫🇷

Florence Dal Degan
R&D INNOVATION SOURCING DIRECTOR, **NOVO NORDISK** 🇩🇪

Guy Hélin
CEO,
SYNGULON 🇫🇷

Stephan Lensky
CHIEF OPERATING AND CHIEF BUSINESS OFFICE,
EPIMAB BIOTHERAPEUTICS 🇫🇷

Sabrina Lesage
STRATEGIC ALLIANCES MANAGER,
PFIZER 🇫🇷

Marie-Ange N'Zoutani
DIRECTOR, EXTERNAL INNOVATION DRUG DISCOVERY, BUSINESS DEVELOPMENT & LICENSING,
SANOFI 🇫🇷

Frédéric Scaërou
SENIOR DIRECTOR, HEAD OF EXTERNAL INNOVATION EUROPE AND ASIA, **IPSEN INNOVATION** 🇫🇷

Nadine Weisslinger-Darmon
MEDICAL DIRECTOR SPECIALTY PRODUCTS, CLINICAL RESEARCH AND ACADEMIC ALLIANCES, **GSK** 🇫🇷

ACADEMIA, TTOs

Hervé Ansanay
OPERATIONS DIRECTOR,
SATT AXLR 🇫🇷

Jürgen Bauer
DEPUTY MANAGING DIRECTOR,
EMBLEM TECHNOLOGY TRANSFER 🇩🇪

Garold Breit
DIRECTOR, TECHNOLOGY BUSINESS DEVELOPMENT,
CITY OF CHARLESTON 🇺🇸

Jean-Luc Chagnaud
HEALTHCARE BUSINESS DEVELOPMENT MANAGER & INTELLECTUAL PROPERTY MANAGER, **AQUITAINE SCIENCE TRANSFERT** 🇫🇷

Anthony Daccache
BUSINESS DEVELOPER,
SATT NORD 🇫🇷

Lilla Farkas
HEAD, OFFICE OF THE MANAGING DIRECTOR, RESEARCH COORDINATOR, **MPI-CBG, MAX PLANCK INSTITUTE OF MOLECULAR CELL BIOLOGY AND GENETICS** 🇩🇪

Esther Lange
INDUSTRY LIAISON MANAGER,
ASCENION 🇩🇪

INVESTORS

Frank Hensel
PRINCIPAL,
HIGH-TECH GRÜNDERFONDS 🇩🇪

Jérôme Majoie
GENERAL MANAGER,
FOUNDATION FOURNIER-MAJOIE 🇫🇷

Sara Nunez-Garcia
BIOTECH INVESTOR,
FORMERLY PRINCIPAL WITH SOFINNOVA PARTNERS 🇫🇷

Zhizhong Yao
ASSOCIATE, CAPITAL FUNDS,
SOFINNOVA PARTNERS 🇫🇷

Loffi Yelles Chaouche
PARTNER,
THEODORUS FUND 🇫🇷

ASSOCIATIONS, CLUSTERS & LAW FIRMS

Nicolas Carboni
PRESIDENT,
RÉSEAU C.U.R.I.E. 🇫🇷

Barbara Freischem
MANAGING DIRECTOR,
EBE - EUROPEAN BIOPHARMACEUTICAL ENTERPRISES 🇫🇷

Yohan Grosjean
COMMUNICATION OFFICER,
AFSSI - THE FRENCH ASSOCIATION OF OUTSOURCING AND INNOVATIVE COMPANIES 🇫🇷

Jean-Louis Hunault
PRESIDENT, **SIMV - THE FRENCH ASSOCIATION OF THE ANIMAL HEALTH INDUSTRY** 🇫🇷

Marco Pintore
GENERAL MANAGER,
BIOVALLEY FRANCE 🇫🇷

Christian Policard
MEMBER OF THE BOARD, CHAIRMAN OF THE BUSINESS DEVELOPMENT SUB-COMMITTEE,
FRANCE BIOTECH 🇫🇷

Emilie Royere
GENERAL MANAGER,
EUROBIOMED 🇫🇷

Cécile Théard-Jallu
PARTNER ATTORNEY,
DE GAULLE FLEURANCE & ASSOCIÉS 🇫🇷

Etienne Vervaecke
GENERAL MANAGER,
EURASANTÉ & NHL CLUSTER 🇫🇷

TABLE OF CONTENTS

Steering Committee	4
Sponsors	7

BIOFIT AGENDA	10
HOSTED EVENTS AGENDA	12

ONE-TO-ONE MEETINGS

Partnering - Who will you meet?	14
Would-be CEO	15

PITCH SESSIONS

Start-up Slams	16
Licensing Opportunity Presentations	20

CONFERENCES

PLENARY SESSION	25
TRACK 1 Best practices in academia-industry R&D collaborations	26
TRACK 2 Nurturing and licensing early-stage assets	30
TRACK 3 Early-stage innovation: Identify the right funding sources	34

HOSTED EVENTS

Partnering Day - Boehringer Ingelheim	38
Roche Day	39
R&D Dating for Animal Health and Innovation	40
Egid Symposium	41
SMMiL-E/Yncréa Event	42
IMODE	43
EDCA - European Diagnostic Clusters Alliance	44
PATHACOV	45

EXHIBITION

Exhibitor List & Floor Plan	46
Exhibitor Descriptions	48

Organisers	74
Supporters & Partners	77
Sponsors	80



Sanofi.com

SANOFI  Empowering Life

SPONSORS

GOLD SPONSOR



SANOFI

Website: www.sanofi.fr

Sanofi is dedicated to supporting people through their health challenges. We are a global biopharmaceutical company focused on human health.

We prevent illness with vaccines, provide innovative treatments to fight pain and ease suffering. We stand by the few who suffer from rare diseases and the millions with long-term chronic conditions.

With more than 100,000 people in 100 countries, Sanofi is transforming scientific innovation into healthcare solutions around the globe.

Sanofi is listed in Paris (EURONEXT: SAN) and in New York (NYSE: SNY).

SILVER SPONSOR



Partnering with Ferring Pharmaceuticals

At Ferring, we partner to deliver innovative medicines that changes people's lives. As a global pharmaceutical company, we pursue strategic partnerships that leverage technologies and capabilities around the globe. In our approach to external innovation, we work as one connected unit with a commitment to establishing collaborations across the development continuum. Our goal is to create long-term mutually beneficial relationships.

We are focused on three therapeutic areas: Reproductive medicine & Women's Health, Gastroenterology/Hepatology and Urology/Uro-oncology.

For more information please visit: www.ferring.com/en/collaborate-with-us

People come first at Ferring



FERRING PHARMACEUTICALS

Website: www.ferring.com

Ferring Pharmaceuticals is a privately owned research-driven, specialty biopharmaceutical company committed to helping people around the world build families and live better lives. Ferring is a leader in reproductive medicine and women's health, and in specialty areas within gastroenterology and urology. Ferring employs 6,500 people worldwide with operating subsidiaries in 65 countries and markets its products in 110 countries. Ferring is actively looking for new opportunities, new partners to develop new innovative treatment solutions for patients.

SPONSORS

BRONZE SPONSORS



BAYER HEALTHCARE SAS

Website: www.bayer.fr

Bayer Pharmaceuticals located in Loos is one of the three divisions of Bayer Group in France. The pharmaceutical activities include: General Medicine (cardiology, women's health), Specialized Medicine (hemophilia, oncology), Ophthalmology and Radiology. Bayer's products help to address the increasing challenges of a growing and aging population and the resulting demand for innovative medicines. In fiscal 2017, the Group employed around 99,800 people and had sales of EUR 35.0 billion. R&D expenses to EUR 4.5 billion. For more information: @Bayer_FR



BOEHRINGER INGELHEIM

Website: www.boehringer-ingelheim.de

Boehringer Ingelheim is a research-driven pharmaceutical company focused on improving the health and quality of life of patients in need. The company develops innovative therapies for which no satisfactory treatment options currently exist. As a family-owned company, Boehringer Ingelheim plans in generations and focuses on long-term success. Some 50,000 employees create value through innovation daily for the three business areas human pharmaceuticals, animal health and biopharmaceuticals.



GENFIT

Website: www.genfit.com

GENFIT is a biopharmaceutical company focused on discovering and developing drug candidates and diagnostic solutions targeting liver diseases, in particular those of metabolic origin, and hepatobiliary diseases. It concentrates its efforts in areas of high unmet medical needs. Its lead proprietary drug candidate, elafibranor, is currently being evaluated in the Phase 3 study "RESOLVE-IT" in nonalcoholic steatohepatitis (NASH) as well as in a Phase 2 study in Primary Biliary Cholangitis (PBC).



MSD

Website: www.msd.com/licensing

MSD has a strong history of success in translating cutting-edge research into life-saving medical breakthroughs. With more than 100 significant business development transactions since 2016, our team has experience working on collaborations from discovery through clinical-stage programs. We believe that by working together we can play a major role in transforming global health care. Together we can invent for life.

SPONSORS

BRONZE SPONSORS



PFIZER

Website: www.pfizer.com

At Pfizer, we apply science and our global resources to bring therapies to people that extend and significantly improve their lives. We strive to set the standard for quality, safety and value in the discovery, development and manufacture of health care products. Our global portfolio includes medicines and vaccines as well as many of the world's best-known consumer health care products. Every day, Pfizer colleagues work across developed and emerging markets to advance wellness, prevention, treatments and cures that challenge the most feared diseases of our time. For more than 150 years, we have worked to make a difference for all who rely on us.



ROCHE

Website: www.roche.com

Roche is a global pioneer in pharmaceuticals and diagnostics focused on advancing science to improve people's lives. The combined strengths of pharmaceuticals and diagnostics under one roof have made Roche the leader in personalised healthcare – a strategy that aims to fit the right treatment to each patient in the best way possible. Roche is the world's largest biotech company, with truly differentiated medicines. In 2017, Roche invested CHF 10.4 billion in R&D.



VIB

Website: www.vib.be

VIB is a life sciences research institute, based in Flanders, Belgium. Some 1,500 top VIB scientists conduct pioneering basic research with a strong focus on translating scientific results into pharmaceutical, agricultural and industrial applications. These applications are often developed by young start-ups from VIB or through collaborations with other companies. This leads to additional employment and bridges the gap between scientific research and entrepreneurship.

CONTRIBUTING SPONSORS



LFB

Website: www.groupe-lfb.com

The LFB Group has been developing, manufacturing and marketing biological medicinal products, for diseases that are always serious and often rare in three major fields of therapy: immunology, haemostasis and intensive care. The LFB group is today a European key player in the field of therapeutic proteins. Over 2,000 employees of the LFB Group, both in France and worldwide, are totally committed to meeting the needs of hundreds of thousands of patients.



EBD GROUP

Website: www.ebdgroup.com

DAY ONE Tuesday, December 4th

	Conferences and roundtable discussions	Pitch sessions		
8.30 am 9.30 am	NAME BADGE PICKUP & WELCOME COFFEE		One-to-one meetings	
9.30 am 11.00 am	ARTOIS 1 Agnostic or pure players in the biotech sector: Who is becoming prominent in the early-stage financing rounds?	ARTOIS 2 Artificial Intelligence to speed up drug discovery: The revolutionary road to advancing innovation		INNOV'AREA Licensing Opportunity Presentations THERAPEUTICS - CNS VACCINES INFECTIOUS DISEASES
11.00 am 11.30 am	NETWORKING BREAK			
11.30 am 1.00 pm	PASTEUR AMPHITHEATRE PLENARY SESSION Seed funds crossing borders: How far and how fast is the early-stage investment market in Biotech globalising?			
1.00 pm 2.30 pm	LUNCH			
2.30 pm 4.00 pm	ARTOIS 1 Beyond shared R&D means of pharma and academic institutions, common strategies for collective success	ARTOIS 2 What are the recent initiatives to ensure more mature assets of academic origin?		INNOV'AREA Start-up Slams THERAPEUTICS - CANCER IMMUNO-ONCOLOGY
4.00 pm 4.30 pm	NETWORKING BREAK			
4.30 pm 6.00 pm	ARTOIS 1 Thinking of the exit scenario to shape a biotech start-up at its first steps: Which model for which term of exit?	INNOV'AREA Licensing Opportunity Presentations THERAPEUTICS - CANCER DIAGNOSTICS - CANCER		
6.30 pm	BIOPARTY			

One-to-one meetings



DAY TWO Wednesday, December 5th

	Conferences and roundtable discussions	Pitch sessions		
8.30 am 9.00 am	WELCOME COFFEE		One-to-one meetings	
9.00 am 10.30 am	ARTOIS 1 What roles do academic institutions or TTOs play as shareholders in spinoffs?	ARTOIS 2 How can common pathways in human and animal health set up a new era for collaborations?		INNOV'AREA Start-up Slams DELIVERY DISCOVERY RESEARCH TOOLS PRODUCTION TOOLS
10.30 am 11.00 am	NETWORKING BREAK			
11.00 am 12.30 pm	ARTOIS 1 Are immunotherapies still an investment Eldorado?	ARTOIS 2 Patient organisations to join the pharma-biotech-academia trio: Is a fourth musketeer calling for a new way to manage alliances?		INNOV'AREA Licensing Opportunity Presentations BIOPRODUCTION DRUG DISCOVERY TOOLS DIAGNOSTICS
12.30 pm 2.00 pm	LUNCH + Would-be CEO Networking Lunch			
2.00 pm 3.30 pm	ARTOIS 1 How available to biotech start-ups have philanthropic and other sources of soft funding become today?	ARTOIS 2 Is externalising the tech transfer function for academic institutions a key to succeed?		INNOV'AREA Start-up Slams DIAGNOSTICS THERAPEUTICS - OTHER INDICATIONS
3.30 pm 4.00 pm	NETWORKING BREAK			
4.00 pm 5.30 pm	ARTOIS 1 Under pressure: How does the urge to bring rare disease therapies create a new range of business or collaborative models?			



TRACK 1:
Best practices in academia-industry R&D collaborations



TRACK 2:
Nurturing and licensing early-stage assets

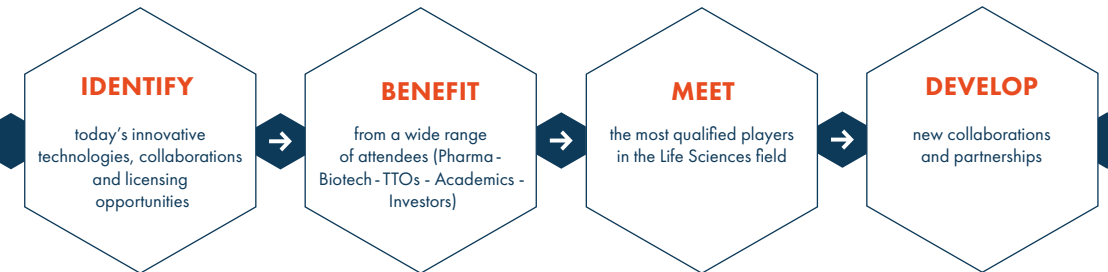


TRACK 3:
Early-stage innovation: Identify the right funding sources







PARTNERING

**48 hours to meet your future project partners,
obtain funding and accelerate innovation**



WHO WILL YOU MEET?

-  **30%** TTOs, Research institutions, Academics
-  **20%** Pharma & Diagnostic companies
-  **20%** Emerging Biotech companies
-  **15%** Preclinical CROs and CDMOs
-  **10%** Pre-seed, seed and Series A investors
-  **5%** Professional services, consulting and law firms

The partnering platform at BioFIT is powered by **partneringONE™**
a service of **EBDGROUP**



WOULD-BE CEO

With the support of:



December 5th, 2018 | 12.30 - 2.00 pm **Exhibition Hall**

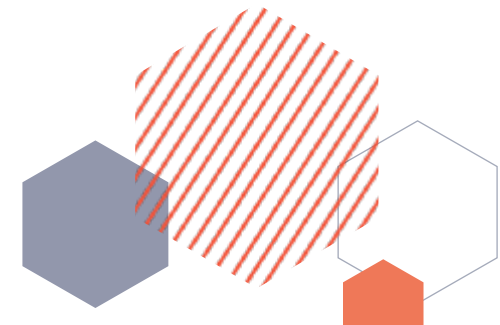
Are you a bioentrepreneur seeking a project? Or do you have projects seeking a CEO?

BioFIT is pleased to announce the organisation of a "Would-be CEO Networking Lunch" on the 2nd day of BioFIT (December 5th).

As talented CEOs are frequently sought-after by many stakeholders of the biotech industry, to both launch and drive new companies to success, this "Would-be CEO Networking Lunch" will bring together representatives of emerging start-ups, technology transfer offices, incubators and investing networks as well as CEOs and would-be CEOs to address this important issue.

Please note that would-be CEOs can also be identified through the BioFIT partnering platform.

Any bioentrepreneur looking for a project to get involved in is welcome to join BioFIT and particularly this "Would-be CEO Networking Lunch". Any incubator or tech transfer entity looking for an entrepreneur to lead their start-up launch projects is also welcome to join.








START-UP SLAMS



The Start-up Slams are presented by bioentrepreneurs of innovative start-up companies (from creation up to Series A). During the presentations, the selected candidates will present their project to potential partners and investors who can support their company and receive valuable feedback and advice («speed-mentoring») from a jury of experts.

DISCOVER THE MOST INNOVATIVE START-UPS IN THE FOLLOWING FIELDS:

Dec. 4 th 2.30 > 4.00 pm	Dec. 5 th 9.00 > 10.30 am	Dec. 5 th 2.00 > 3.30 pm
 <p>THERAPEUTICS - CANCER IMMUNO-ONCOLOGY</p> <ul style="list-style-type: none"> • OncoQR ML GmbH • Peptomycs S.L. • Odimma • OPSYON • LIFT BioSciences • Tubulis 	 <p>DELIVERY DISCOVERY RESEARCH TOOLS</p> <ul style="list-style-type: none"> • MyLife Technologies • ATLANGRAM • Mind the Byte • InBrain Pharma 	 <p>PRODUCTION TOOLS</p> <ul style="list-style-type: none"> • NUMAFERM • UGISense
	 <p>DIAGNOSTICS</p> <ul style="list-style-type: none"> • Carmentix • Sencet 	 <p>THERAPEUTICS - OTHER INDICATIONS</p> <ul style="list-style-type: none"> • Op2Lysis • Phyteau • APIOS • Madam Therapeutics • MTact • Elasmogen Ltd

AWARD CEREMONY Dec. 5th 3.30 pm | INNOV' AREA EXHIBITION HALL

The most innovative start-ups will be awarded on BioFIT 2nd day at 3.30 pm in the INNOV' AREA in the exhibition hall.



JURIES' EXPERTS:

Garold Breit

DIRECTOR, TECHNOLOGY
BUSINESS DEVELOPMENT,
CITY OF CHARLESTON 🇺🇸

Esther Lange

INDUSTRY LIAISON
MANAGER,
ASCENION 🇩🇪

Jürgen May

GLOBAL BUSINESS
DEVELOPMENT MANAGER
ROCHE 🇨🇭

Florence Dal Degan

R&D INNOVATION
SOURCING DIRECTOR,
NOVO NORDISK 🇩🇪

Stephan Lensky

CHIEF OPERATING
& CHIEF BUSINESS OFFICE,
EPIMAB BIOTHERAPEUTICS 🇨🇭

Frank Hensel

PRINCIPAL,
HIGH-TECH GRÜNDERFONDS 🇩🇪

Gustavo De Freitas Morais

PARTNER,
DANNEMANN, SIEMSEN,
BIGLER & I MOREIRA 🇧🇷

Jürgen Bauer

DEPUTY MANAGING DIRECTOR,
EMBLEM TECHNOLOGY TRANSFER 🇩🇪

Serge Pampfer

MANAGING DIRECTOR,
WBC INCUBATOR 🇩🇪

Yanxiang Zhou

ASSOCIATE
ILLUMINA VENTURES 🇺🇸

Marie-Ange N'Zoutani

DIRECTOR, EXTERNAL INNOVATION
DRUG DISCOVERY, BUSINESS
DEVELOPMENT & LICENSING,
SANOFI 🇫🇷

Mehdi Ainouche

PHARM. D, ANALYST,
TURENNE CAPITAL 🇫🇷

Jerôme Majoie

GENERAL MANAGER,
FOURNIER-MAJOIE FOUNDATION 🇩🇪

Philippe Monteyne

PARTNER,
FUND+ 🇩🇪

Ward Capoen

SENIOR ANALYST,
V-BIO VENTURES 🇩🇪

Alison Munro

ALISON MUNRO CORPORATE
LANGUAGE 🇫🇷

AGENDA | START-UP SLAMS

Dec. 4th 2.30 > 4.00 pm | INNOV' AREA



THERAPEUTICS - CANCER | IMMUNO-ONCOLOGY

- OncoQR ML GmbH** 🇩🇪 Immuno-oncology | Immunogenicity-boosting | Anti-tumor-immune-response
- Peptomyc S.L.** 🇪🇸 Cancer therapy | Peptide therapeutics | Anti-Myc therapy
- Odimma** 🇫🇷 Personalised Medicine | Cancer Immunotherapy | Neoantigens
- OPSYON** 🇩🇪 Immune checkpoint | CD47 | Bifunctional antibody
- LifT BioSciences** 🇬🇧 Cancer | Killing | Neutrophils
- Tubulis** 🇩🇪 Antibody Drug Conjugates (ADCs) | ADC Stability | ADC Discovery

Dec. 5th 9.00 > 10.30 am | INNOV' AREA



DELIVERY | DISCOVERY | RESEARCH TOOLS

- MyLife Technologies** 🇩🇪 Microneedles | Drug delivery | Peptides
- ATLANGRAM** 🇫🇷 Antibiotic | Resistance | Drug delivery
- Mind the Byte** 🇪🇸 Drug Discovery | Artificial Intelligence | Cloud Computing
- InBrain Pharma** 🇫🇷 Brain Infusion | Neurodegenerative diseases | Parkinson's disease



PRODUCTION TOOLS

- NUMAFERM** 🇩🇪 Recombinant | Peptides | High-yield
- UGISense AG** 🇩🇪 Ugimers | Antisense-platform | Antisense drug-development

Dec. 5th 2.00 > 3.30 pm | INNOV' AREA



DIAGNOSTICS

- Carmentix** 🇩🇪 Diagnostics | Preterm Birth | Data Mining
- Sencet** 🇫🇷 Cancer diagnostics | Characterization of circulating tumor cells | Single Cell analysis



THERAPEUTICS - OTHER INDICATIONS

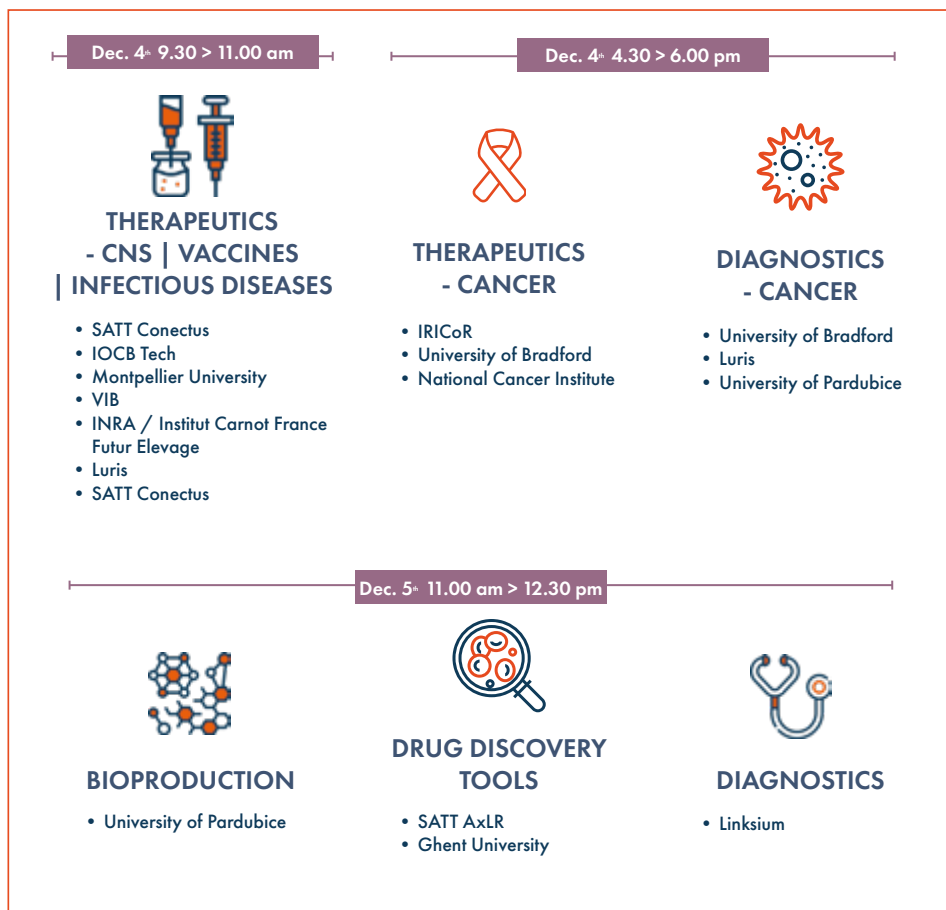
- Phyteau** 🇬🇧 Diabetes | Obesity | Incretin therapy
- APIOS** 🇫🇷 Bone reconstruction | Orthobiologics | Drug delivery
- Madam Therapeutics** 🇩🇪 Anti-infectives | Anti-microbial resistance | Antibiotics
- MTact** 🇫🇷 Tauopathies | Microtubules targeting agents | First-in-class
- Op2Lysis** 🇫🇷 Intracerebral Hemorrhage (ICH) | Biotechnology | Evacuation brain hematoma
- Elasmogen Ltd** 🇬🇧 SoloMERs | Biologics | Site-specific

LICENSING OPPORTUNITY PRESENTATIONS

The Licensing Opportunity Presentations are presented by TTOs, universities or related structures which have ready-to-be-licensed technologies.

The aim of this session is to foster alliances and business development opportunities on innovative projects stemming from academia.

DISCOVER THE LATEST INNOVATIONS IN THE FOLLOWING FIELDS:



AGENDA | LICENSING OPPORTUNITY PRESENTATIONS

Dec. 4th 9.30 > 11.00 am | INNOV' AREA



THERAPEUTICS – CNS | VACCINES | INFECTIOUS DISEASES

SATT Conectus

TrkB | Neuroprotection | Huntington

IOCB Tech

Neurosteroids | Epilepsy | NMDA receptor

Montpellier University

Huntington's disease | Peptide therapy | ODD from EMA

VIB

Alzheimer's Disease | Tau | Drug Discovery

INRA / Institut Carnot France Futur Elevage

Vaccine platform | Nucleoprotein nanoparticles | Infectious diseases

Luris

Antivirals emerging diseases therapy | Ubiquitin | Protein engineering

SATT Conectus

Antibacterial agent | Multi-resistance mechanisms countering | Nosocomial infections-MRSA/VRSA/VRE diseases



THERAPEUTICS - CANCER

IRICoR 

RAF inhibitor | RAS-mutant cancers | Paradoxical activation

University of Bradford 

Cancer | Therapeutics | Peptide

National Cancer Institute 

Cancer | Tumor-specific | Antibody



DIAGNOSTICS - CANCER

University of Bradford 

Cancer | Diagnostic | Metastasis

Luris 

Cancer predisposition | Lynch syndrome / colorectal cancer | Genetic variants

University of Pardubice 

Cancer diagnostic | Mass spectrometry | Lipid



BIOPRODUCTION

University of Pardubice 

Protein purification | Phosphopeptides enrichment | TiO₂ nanotubes



DRUG DISCOVERY TOOLS

SATT AxLR 

Electrospined nanofibers culture system | Haptokinesis | Drug screening

Ghent University 

Poly(2--oxazoline)s | Polymer therapeutics | Drug delivery



DIAGNOSTICS

Linksium 

ZEBRA biomarker | Serological test | Post-transplant lymphoproliferative disorder (PTLD)

CONFERENCE PROGRAMME

BioFIT 2018 conference programme is tailored to fit the expectations of its audience, whose sharp minds evolve in the fast-paced and dynamic Life Sciences sector. Built around 12 sessions and 1 plenary session, the 2018 programme is rooted in three custom-made tracks, addressing the right funding sources for early-stage innovation, best practices in academia-industry R&D collaborations, and nurturing early-stage assets.

TRACK 1

**Best practices in academia-industry
R&D collaborations**

TRACK 2

**Nurturing and licensing
early-stage assets**

TRACK 3

**Early-stage innovation:
Identify the right funding sources**

PLENARY SESSION

DEC. 4TH 11.30 AM - 1.00 PM

Pasteur Amphitheatre

SEED FUNDS CROSSING BORDERS: HOW FAR AND HOW FAST IS THE EARLY-STAGE INVESTMENT MARKET IN BIOTECH GLOBALISING?

The early-stage investment actors can be seen as traditionally geographically anchored, but now seed and Series A investors tend to invest in more diverse geographic areas. Where does the money come from? How far is this evolution towards more global funds going? How fast is it going in the investment community? Will it make the investors more willing to take risks, will it change the risk landscape? Isn't there an ill-balance today between the geographical origin of investment capabilities and the areas that are crawling with projects needing equity investment?

MODERATOR:



Lisa Urquhart
Editor,
EP Vantage



Zishan Haroon
Chairman and General Partner,
Julz Co



Jemila Houacine
Associate,
Medixi



Mirko Scherer
Managing Partner and CEO,
TVM Capital China Limited



Stephan Lensky
Chief Operating and Chief
Business Officer,
EpimAb Biotherapeutics

CONFERENCE PROGRAMME



TRACK 1

Best practices in academia-industry R&D collaborations

DEC. 4TH 9.30 - 11.00 AM

Artois 2 Room

ARTIFICIAL INTELLIGENCE TO SPEED UP DRUG DISCOVERY: THE REVOLUTIONARY ROAD TO ADVANCING INNOVATION

Companies are now using machine learning in highly specific ways to streamline and improve many day-to-day biomedical research tasks. The use of AI has shifted from generalist tasks to purpose-built tools with numerous applications to speed up drug discovery at all the different research stages. The panel will address some of the uses of AI, ultimately potentially cutting R&D costs by aggregating and synthesising information, repurposing existing drugs, generating and validating novel drug candidates, designing drugs and preclinical experiments, etc.

MODERATOR:

Melanie Senior
Healthcare Writer & Analyst,
Pharma Intelligence | Informa 

Emmet Browne
CEO,
Nuritas 

Pascal Sempé
Cognitive/AI Solution
Specialist - Life Sciences,
IBM Watson Health Solutions, IBM 

Phil L'Huillier
Head, European Innovation Hub,
MSD 

Avishai Levy
CEO,
MIGAL - Galilee Research
Institute 

DEC. 4TH 2.30 - 4.00 PM

Artois 1 Room

BEYOND SHARED R&D MEANS OF PHARMA AND ACADEMIC INSTITUTIONS, COMMON STRATEGIES FOR COLLECTIVE SUCCESS

Beyond sharing physical means, this session focuses on deliberate strategies of life sciences industry and the academic world to pool R&D resources to address common questions and reach common goals through shared R&D strategies and aligned incentives. We will review some partnerships that have chosen to take a leap forward and collaborate on scientific projects that they couldn't do on their own.

MODERATOR:

Ewa G. Truchanowicz
Life Sciences Lead,
University of Birmingham
Enterprise 

Marco A. Chacón
AVP Industry Alliances,
University of Maryland,
Baltimore 

Nick Clarke
Head of UK Academic
Partnerships, External Sciences
and Innovation,
Pfizer Worldwide Research and
Development 

Thierry Guillaudeux
Director,
UMS Biosit SFR 

Dominic De Groot
Sr. Business Manager Pharma,
Ghent University 

DEC. 5TH 9.00 - 10.30 AM

Artois 2 Room

HOW CAN COMMON PATHWAYS IN HUMAN AND ANIMAL HEALTH SET UP A NEW ERA FOR COLLABORATIONS?

Why should a human-focused biotech company be interested in the animal health industry? Are there common grounds that can lead to more frequent and fruitful collaborations between animal and human health companies in the future? Today, it is obvious that the animal health industry offers a clear value proposition to human biotechnology companies, which can maximise the financial and clinical impact of their assets by leveraging both human and veterinary health. The physio pathological features of several diseases (cancer, osteoarticular affections, infectious diseases, pain...) are progressively understood as at least common between animal and human. This paves the way to innovative products developed under the sign of a so-called comparative medicine. This panel will encourage a provocative, straightforward and realistic discussion on what each side needs from the other to set up mutual beneficial partnerships.

MODERATOR:

Oliver Hardcastle
CEO, ANIZOME 🇺🇸

Luigi Aurisicchio
CEO, Takis Biotech
and CEO, EVVIVAX 🇮🇹

Laëtitia Gerbe
Partner for investments in AVF
fund, Seventure Partners 🇫🇷

Sven Arnouts

Business Development Manager,
PROVAXS 🇧🇪

Steve Nanchen

Advisor External Innovation,
Elanco R&D 🇨🇭

DEC. 5TH 11.00 AM - 12.30 PM

Artois 2 Room

PATIENT ORGANISATIONS TO JOIN THE PHARMA-BIOTECH-ACADEMIA TRIO: IS A FOURTH MUSKETEER CALLING FOR A NEW WAY TO MANAGE ALLIANCES?

What are the consequences and benefits of adding patient organisations to existing alliances? How do these collaborations work? How do they create value for the whole life sciences community? What is the actual influence on patients of public/private partnerships? What is the actual involvement of patient organisation in financing the collaborations?

MODERATOR:

Andreas L.G. Reimann
Co-Founder and Managing Partner,
admedicum Business for Patients 🇧🇪

Mathias Schmidt
CEO,
ArmaGen 🇪🇸

Philippe Bordes
Global Alliance Manager -
Public Private Partnerships,
Sanofi 🇫🇷

Elli Karagianni

SNE/ Scientific Project Officer,
Patient engagement,
IMI - Innovative Medicines Initiative 🇪🇺

Olivier Arnaud

Senior Director - European
Research,
JDRF - Juvenile Diabetes Research
Foundation 🇫🇷



Strategic **PARTNERSHIP** is at the heart of fulfilling Pfizer's purpose as we work to translate advanced science and technologies into medicines and vaccines that significantly improve patients' lives.

www.pfizer.com/partners/research-and-development

Visit the Pfizer partnering website to learn more about:

- Our Areas of Interest
- Our Partnering Leadership
- Our Process
- Contact Information
- Partnering Highlights



WORKING
TOGETHER
FOR BETTER HEALTH

At Boehringer Ingelheim we believe in forming durable partnerships to develop innovative new medicines in areas of high unmet need. Our relationships range from discovery research, development and technology collaborations to clinical and commercial partnerships and full-scale, long-term strategic alliances.

Improving the health and quality of life of patients is the goal of the research-driven pharmaceutical company Boehringer Ingelheim. The focus in doing so is on diseases for which no satisfactory treatment option exists to date. Family-owned since it was established in 1885, Boehringer Ingelheim is one of the pharmaceutical industry's top 20 companies. Some 50,000 employees create value through innovation daily for the three business areas human pharmaceuticals, animal health and biopharmaceuticals. In 2017, Boehringer Ingelheim achieved net sales of nearly 18.1 billion euros. R&D expenditure, exceeding three billion euros, corresponded to 17.0 per cent of net sales.

We invite you to find out more about partnering with us by visiting
www.boehringer-ingelheim.com/partnering



CONFERENCE PROGRAMME



TRACK 2

Nurturing and licensing early-stage assets

DEC. 4TH 2.30 - 4.00 PM

Artois 2 Room

WHAT ARE THE RECENT INITIATIVES TO ENSURE MORE MATURE ASSETS OF ACADEMIC ORIGIN?

What are the latest group actions to have been jointly taken by the industry, academic institutions, equity investors, and governmental bodies that take academic-origin assets as early as possible and inject the proper amount of money into them, in order to get the project licensed at the right moment and at the safest possible stage?

MODERATOR:

Ian Carter

Director,
Carter Research Navigation

Steven J. Klein

VP Business Development,
IRICoR - Institute for Research in
Immunology and Cancer -
Commercialization of Research

Michael L. Salgaller

Supervisor, Invention
Development and Marketing
Unit, National Institutes of Health
(NIH) | National Cancer Institute
(NCI) | Technology Transfer
Center

Hélène Peyro-Saint-Paul

Partner and Cofounder,
LallianSe Entrepreneurs

DEC. 5TH 9.00 - 10.30 AM

Artois 1 Room

WHAT ROLES DO ACADEMIC INSTITUTIONS OR TTOS PLAY AS SHAREHOLDERS IN SPINOFFS?

When spinning out a company, one strategy applied by the university or TTO is often to take an equity position in the start-up. When this happens, how do the university or TTO play their role as a shareholder? Do they keep a close eye on the development of the company and continue to offer active support or do they act more as a sleeping partner? How is the risk measured and what is the exit short-term/long-term strategy chosen by those unusual shareholders?

MODERATOR:

Einat Zisman

Independent Consultant

Pascale Augé

Chairman of the Executive
Management Board,
Inserm Transfert

Caroline Barelle

CEO,
Elasmogen

Grégoire Franoux

Global Head of Business
Development and Licensing,
Oxurion

Adrian Ibrahim

Head of Business Development
and Technology Transfer,
Wellcome Sanger Institute

DEC. 5TH 2.00 - 3.30 PM

Artois 2 Room

IS EXTERNALISING THE TECH TRANSFER FUNCTION FOR ACADEMIC INSTITUTIONS A KEY TO SUCCEED?

Technology transfer offices play a central role in the biotech ecosystem, as they are meant to bridge the gap between bench and bedside and succeed in commercialising an academic discovery. As most new biotech start-ups arise out of IP resulting from academic research, the efficiency of this system is of outmost importance. This panel discussion will highlight both successes and limits in that externalisation of tech transfer approach.

MODERATOR:

Rafaela Kunz

Open Innovation Consultant,
INSEA Consulting 🇩🇪

Gábor M. Lamm

Managing Director,
EMBLEM Technology Transfer 🇪🇺

Wim Van Camp

General Manager
Technology Transfer,
Ghent University 🇧🇪

Alain Chevallier

Life Sciences Partner,
Truffle Capital 🇫🇷

Lionel Pujol

Operational Support Director,
SATT Nord 🇫🇷

DEC. 5TH 4.00 - 5.30 PM

Artois 1 Room

UNDER PRESSURE: HOW DOES THE URGE TO BRING RARE DISEASE THERAPIES CREATE A NEW RANGE OF BUSINESS OR COLLABORATIVE MODELS?

Bringing new therapies to treat rare diseases requires more than scientific innovation. Innovation in business models and incubation financing is critical as the need to find ways to cost effectively develop new medication is becoming highly important. Initiatives like collaboration centres and rare disease centres try to take the best of both worlds by implementing multidimensional approaches to address the needs of the rare disease community. In addition to conducting their own research, collaborative models that feature pharmaceutical companies, academic institutions, start-ups and patient groups are now being put in place.

MODERATOR:

Alastair Kent

Independent Healthcare
Consultant 🇬🇧

Anjan Aralihalli

Venture Partner,
CTI Life Sciences Fund II 🇮🇳

Bertrand Verwee

International Health Policy
Leader, Rare Diseases
Roche 🇳🇱

Tiina K. Urv

Program Director, Office of Rare
Diseases Research, National
Center for Advancing Translational
Sciences, National Institutes of
Health (NIH) 🇺🇸

Nawal Bahia El Idrissi

Business Developer,
Catalyze 🇲🇦

EBD GROUP

EBD Group's mission is to help collaborations get started in the life science sector. Our partnering conferences are the largest and most productive conference platform in the industry, with landmark events powered by our state-of-the-art partnering software, partneringONE®. Delegates efficiently identify new opportunities and engage via one-to-one meetings. Annually our events attract 15,000 senior executives who engage in 50,000 partnering meetings, driving innovation in our industry. www.ebdgroup.com

VIB is open for partnering and collaboration

www.vib.be
SCIENCE MEETS LIFE

science meets business

VIB
is an excellence-based entrepreneurial academic institute that focuses on translating basic scientific results into pharmaceutical, industrial and agricultural applications.

CONFERENCE PROGRAMME



TRACK 3

**Early-stage innovation:
Identify the right
funding sources**

DEC. 4TH 9.30 - 11.00 AM

Artois 1 Room

AGNOSTIC OR PURE PLAYERS IN THE BIOTECH SECTOR:

WHO IS BECOMING PROMINENT IN THE EARLY-STAGE FINANCING ROUNDS?

The seed investment market is comprised of players with a varied degrees of specialisation, from totally agnostic players involved in multiple industries, to pure players focusing on specific therapeutic areas. Do most specialised funds attract the more generalist types in the financing rounds? What is the importance of the amount of seed investment today for cross-industry funds, 100% healthcare-oriented funds and pure players in the biotech industry, respectively?

Jan Adams
Managing Director,
EMBL Ventures 🇩🇪

Jonathan Tobin
Investment Director,
Arix Bioscience 🇬🇧

Camilla Petrycer Hansen
Senior Associate,
Novo Seeds 🇩🇪

Jean-Charles Brosse
Partner Healthcare and Life
Sciences,
Positive Capital 🇫🇷

Jacky Vonderscher
CEO,
ENYO Pharma 🇩🇪

DEC. 4TH 4.30 - 6.00 PM

Artois 1 Room

THINKING OF THE EXIT SCENARIO TO SHAPE A BIOTECH START-UP AT ITS FIRST STEPS: WHICH MODEL FOR WHICH TERM OF EXIT?

When creating a biotech start-up, different routes can be taken: the virtual biotech model, the technology platform model, the one single asset company... How do those initial choices influence the exit scenario of the company?

MODERATOR:

Lucie Ellis
Managing Editor,
In Vivo Pharma Intelligence
| Informa 🇬🇧

Mark Krul
Partner,
Aglaia BioMedical Ventures 🇧🇪

Rodolphe Besserve
Head SuFT Advisory,
Société Générale Corporate
Investments and Banking 🇫🇷

Peter Leonardi
CEO,
OmniCyte 🇺🇸

George Hoffmann
Co-founder and CEO,
Network Immunology 🇩🇪

DEC. 5TH 11.00 AM - 12.30 PM

Artois 1 Room

ARE IMMUNOTHERAPIES STILL AN INVESTMENT ELDORADO?

Investment in immunotherapy in 2018 is still attractive and sought out; what is its growth potential after several years of being an investment blockbuster? What have been the 2018 investment successes in immunotherapy? Will immunotherapy disrupt the oncology market? Are we at the growth, maturity, or saturation stage when we talk about investing in immunotherapy?

MODERATOR:

Chris Shelley

Partner and Head of Life Sciences,

Penningtons Manches LLP

Bram Vanparys

Partner,
Gimv

Madiha Derouazi

Founder and CEO,
AMAL Therapeutics

Khatereh Ahmadi

Executive Director, Oncology Search and Evaluation Lead, European Hub

MSD

Michael Motz

Chief Business Officer,
NETRIS Pharma

Juan R. Garcia

CEO,
BioSeed Capital

DEC. 5TH 2.00 - 3.30 PM

Artois 1 Room

HOW AVAILABLE TO BIOTECH START-UPS HAVE PHILANTHROPIC AND OTHER SOURCES OF SOFT FUNDING BECOME TODAY?

All of these non-dilutive financing sources are becoming increasingly numerous thanks to both the emergence of interest expressed by many trusts and foundations in financing innovative start-ups, and also to the many governmental schemes that are devoted to financing the first steps of biotech start-ups. How do these sources of revenue lead to real leverage effect or create constraints for the companies? What types of constraints do they expose biotech entrepreneurs to?

MODERATOR:

Arezki Yaïche

Financial Journalist,
Paris Bureau Chief -
Mergermarket

Fatima Sulaiman

Head of Research and Services,
Scleroderma & Raynaud's UK

Steve Poirier

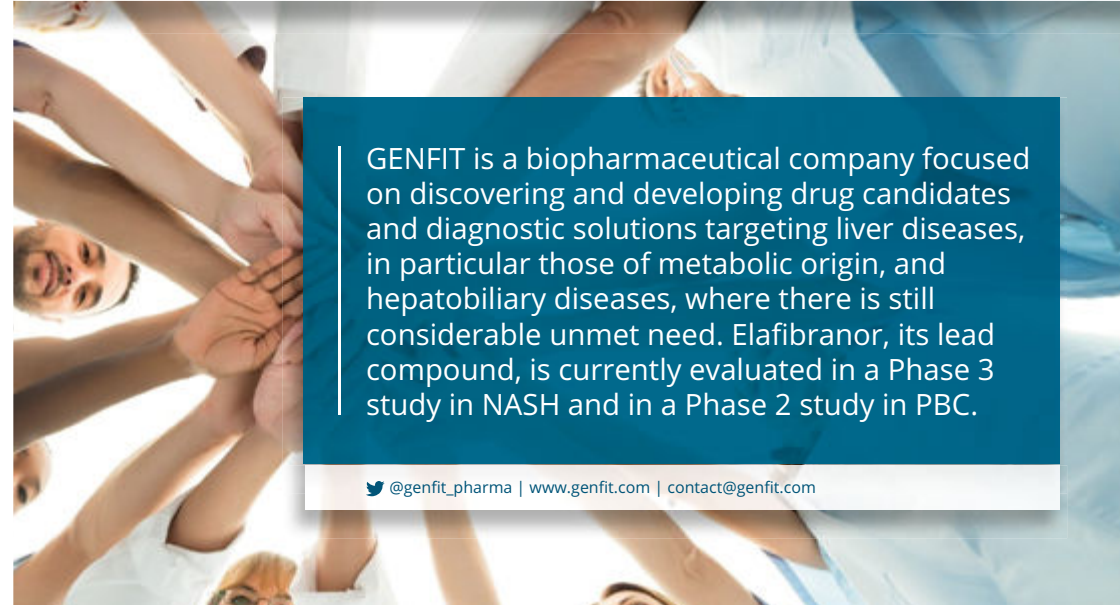
CEO and Co-founder,
MONOGENIC Pharmaceuticals

Maya Merrell

Director, Business and
Partnership Development,
Fast Forward

Oliver Gajda

Executive Director and Founder,
European Crowdfunding
Network



GENFIT is a biopharmaceutical company focused on discovering and developing drug candidates and diagnostic solutions targeting liver diseases, in particular those of metabolic origin, and hepatobiliary diseases, where there is still considerable unmet need. Elafibranor, its lead compound, is currently evaluated in a Phase 3 study in NASH and in a Phase 2 study in PBC.

@genfit_pharma | www.genfit.com | contact@genfit.com

INVENT WITH US

MSD BUSINESS DEVELOPMENT & LICENSING

MSD is inventing because the world still needs cures for cancer, Alzheimer's disease, HIV, and so many other causes of widespread suffering.

We believe that building strong partnerships is critical to solving these challenging diseases — to help people go on, unburdened, to experience, create and live their best lives.

Together we can invent for life.

Learn more at msd.com/licensing.

MSD is known as Merck in the United States and Canada.
Copyright © 2018 Merck Sharp & Dohme, a subsidiary of Merck & Co., Inc. All rights reserved. 9-18

INNOVATION @ BOEHRINGER INGELHEIM

Partnering Day **December 3rd, 2018** **Rotterdam Room**



Fostering Innovation

Boehringer Ingelheim knows what it takes to be innovative and entrepreneurial. From the small factory in 1885 to today's global pharmaceutical organisation, we know how important it is to nurture and develop emerging science and technology.

Our track record of bringing breakthrough medicines to patients starts with new ideas and new science, and collaborations with external partners play a key role in helping us deliver an innovation-led portfolio. Join us at our partnering day to explore how we can develop the next generation of medicines together.

For more information on our partnering interests please visit:
www.boehringer-ingelheim.com/partnering/interests

Meet our Research and Partnering Teams

12.00 - 1.30 PM	Networking Lunch
12.30 - 3.30 PM	1:1 Partnering Meetings
3.45 - 4.30 PM	Company Presentations
4.30 - 5.30 PM	Panel Discussion: Collaborative Research and Partnering with Boehringer Ingelheim
5.30 - 6.30 PM	Networking Reception

ROCHE DAY



Programme **Dec. 4th, 2018** | **9.00 am - 6.00 pm** **Van Gogh Room**

"HEALTH INNOVATION IN THE HAUTS-DE-FRANCE REGION"

9.00 - 9.30 AM | **Welcome coffee**

9.30 - 9.50 AM | **Introduction**

9.50 - 11.00 AM | **Experience sharing of the Hauts-de-France's institutions**

- Stroke management through telemedicine, set up by the Hospital Centre of Valenciennes
- The Patient Report Outcomes (PROs) and the anticipation of the chemotherapy "okay" for a connected application
- POSOS: Artificial intelligence in the service of prescription for medication
- Wound management through a digital solution
- The importance of focusing on humans and staying connected to fight cancer: Children's words, a family issue
- Learning through simulation and surgical robotics for therapeutic innovation

11.00 - 11.20 AM | **Break**

11.20 AM - 12.10 PM | **Turning the spotlight on start-ups**

12.10 - 1.00 PM | **Connected Medicine**

- Which e-health device could improve patient management?
- My Oscar: The patient who carries his own hospital file
- Competence sharing in diabetology: PreciDIAB, the project of Lille
- Innovation in radiology: The Hauts-de-France regional project in neuroradiology

1.00 - 2.15 PM | **Lunch**

2.15 - 3.15 PM | **Big data**

- What are the vision and the strategy for IBM Watson Health in the healthcare sector?
- The INCLUDE project: Data warehouse and artificial intelligence at the Lille University Hospital

3.15 - 4.15 PM | **Access and funding for innovation**

- The Region's vision
- Personalised reimbursement model (PRM)
- How to maintain the access to therapeutic innovation?

4.15 - 4.30 PM | **Break**

4.30 - 5.30 PM | **Right and ethics**

- Roundtable discussion on digital health: Educational, ethics and legal aspects

5.30 - 6.00 PM | **Key learning points** | **Conclusion**

R&D DATING FOR ANIMAL HEALTH AND INNOVATION

December 4th & 5th, 2018



BioFIT 2018 hosts the 4th edition of the “R&D dating for Animal Health and Innovation” business convention, at the French association for the animal healthcare industry (SIMV)’s initiative.

Today, public-private and private-private partnerships are thought to be the leverage that is needed for innovation. That is why the SIMV launched the “R&D dating for Animal Health and Innovation”, which strives to initiate high-level exchanges between research departments of the veterinary medicine and diagnostics industry and public research, as well as with biotechnology companies (start-ups).

By enabling face-to-face encounters, the event enhances the visibility of cutting-edge research in France and in Europe, encourages investments and leads to therapeutic innovation.

Animal Health R&D Service Presentations

December 4th, 2018 **Rembrandt Room**

- 2.30 - 2.45 PM **INRA’s infectiology platform (PFIE)**
Stéphane Abrioux, INRA
- 3.15 - 3.30 PM **How to collaborate with Spanish entities in R&D&i in Animal Health field?: Vetinnova**
Patricia Fernández Martínez, VET+i
- 3.30 - 3.45 PM **Infectious Disease Models and Innovative Therapies**
Raphaël Ho Tsong Fang, IDMIT
- 3.45 - 4.15 PM **Microbiota: Applications in development in Animal Health**
David Peiteau, INRA

Organised by:



Contact: secretariat@simv.org

EGID SYMPOSIUM

December 4th, 2018 **Eurotop Room**

5th edition: THE GUT, INCRETINS, DIABETES



Steering Committee



Philippe Froguel

MD, Ph D, Director of UMR CNRS 8199-University of Lille and Pasteur Institute of Lille, Director of Research Federation 3508 labex EGID and Director of equipex LIGAN Personalized Medicine and Institute of Genomics of Lille



François Pattou

Professor of surgery, University of Lille, CHU Lille Inserm



Bart Staels

Director of UMR1011 Inserm, University of Lille – EGID, CHU Lille, Pasteur Institute of Lille

Programme Overview

- 8.30 - 9.00 AM WELCOME COFFEE & SYMPOSIUM MATERIAL DISTRIBUTION
- 9.00 - 9.15 AM INTRODUCTION AND WELCOMING
- 9.15 - 10.00 AM Gut-Brain glucose signalling in the control of energy homeostasis
Gilles Mithieux, Director UMR-S1213-UCBL, Director of ALECS, Inserm 1213, Faculty of Medicine Laennec
- 10.00 - 10.45 AM Food and type 2 diabetes: Restoring the Milieu Interieur
Roy Taylor, Professor of Medicine and Metabolism and Director, Newcastle Magnetic Resonance Centre, Newcastle University
- 10.45 - 11.30 AM Microbiota and Cardiometabolic disease
Albert K. Groen, AMC Amsterdam & UMCG Groningen
- 11.30 AM - 2.30 PM DRINK + POSTER SESSION + LUNCH
- 2.30 - 3.15 PM Incretins, diabetes and CV disease
Nikolaus Marx, Professor of Medicine / Cardiology, Head of the Department of Internal Medicine I, University Hospital Aachen
- 3.15 - 4.00 PM Therapeutic potential of multi-incretin therapy – from mice to men
Aimo Kann, Head, Comorbidities and Complications of Diabetes, Sanofi Diabetes Research
- 4.00 - 4.30 PM NETWORKING BREAK
- 4.30 - 5.00 PM BEST PAPER AWARD
- 5.00 PM CONCLUSION & INVITATION TO THE CHEESE AND WINE COCKTAIL

In partnership with:



SMMIL-E/YNCREA EVENT
DIGITAL SYSTEMS & LIFE SCIENCES



Programme December 4th, 2018 **Hainaut Room**

WORKSHOP ON "ORGAN ON CHIP FOR CELL THERAPY AND DRUGS SCREENING"

- 2.00 - 2.30 PM** Cell fibers for cell therapy and organ on chip application
Pr. Shoji Takeuchi, Institute of Industrial Science, University of Tokyo
- 2.30 - 2.55 PM** Developing Tools to Stem the Illicit Trafficking of Protected Species
Pr. Karl Bohringer, University of Washington, Seattle, USA
- 2.55 - 3.20 PM** Study of the Metastatic Process by 3D Cells Models
Dr. Jean-Louis Viovy, Curie Institute, Paris, France
- 3.20 - 3.45 PM** Biomimetic approaches in Liver Tissue Engineering: Application to drug screening and bioartificial liver
Dr. Cécile Legallais, Laboratory BMBI, UT Compiègne, France
- 3.45 - 4.00 PM** 3D cells model for high content drug screening for vascularisation evaluation
Dr. Nathalie Maubon, HCS Pharma, Lille, France
Dr. Fabrice Soncin, LIMMS/CNRS-IIS, Lille, France
Dr. Yukiko Matsunaga, Institute of Industrial Science, University of Tokyo
- 4.00 - 4.30 PM** NETWORKING BREAK
- 4.30 - 5.30 PM** Round table: What curriculum for Research or Education on Digital Systems and Life Science
- 5.30 - 5.45 PM** Presentation of the Yncréa Chair: Digital Systems and Life Sciences
Mr. Thierry Occre, General Director, Yncréa ISEN Lille, France and Yncréa Morocco
Dr. Andreas Kaiser, Research and Innovation Director, Yncréa Hauts-de-France, Lille, France
Dr. Dominique Collard, LIMMS/CNRS-IIS, Research Director at CNRS, Chair Director
- 5.45 - 6.00 PM** PRESS CONFERENCE

In partnership with:



IMODE December 4th, 2018 | 9.15 am - 6.30 pm **Rembrandt Room**



IMODE is organising its second annual convention during BioFIT with a morning of conferences and participation in the BioFIT one-to-one meetings during the afternoon.

Conference Programme Overview:

- 8.30 - 9.15 AM** Name badge pickup and Welcome coffee - BioFIT
- 9.15 - 9.30 AM** IMODE overall presentation
Pr. Frédéric Affouard, University of Lille, UMET Laboratory, IMODE's coordinator
- 9.30 - 10.00 AM** Testing of New Drugs & Devices for Regulatory Approvals
Dr. Isaac John, Ashford and St Peter's Hospital's NHS Foundation Trust
- 10.00 - 10.30 AM** Electrospinning approach for drug delivery
Dr. Stéphanie Degoutin, University of Lille, UMET Laboratory
- 10.30 - 11.00 AM** Nanostructured materials: The next generation of active stents vessels
Dr. Ariane Boudier, University of Lorraine, Director of CITHEFOR Laboratory
- 11.00 - 11.30 AM** Networking break - BioFIT
- 11.30 AM - 12.00 PM** Tissue Engineering approach
Dr. Nicolas L'Heureux, University of Bordeaux, Director of BioTis Laboratory
- 12.00 - 12.30 PM** Regenerative medicine approach
Dr. Laurence Bordenave, CHU Bordeaux, Head of Nuclear Medicine
- 12.30 - 1.00 PM** Cardiovascular Disease, Restenosis and Thrombosis
Dr. Blandine Maurel, CHU Nantes, Vascular surgeon
- 1.00 - 2.30 PM** Lunch - BioFIT
- 2.30 - 6.30 PM** One-to-one meetings - BioFIT

IMODE is a collaborative research project for multicomponent pharmaceutical products (co-amorphous and co-crystals) and medical devices that are loaded with bioactive molecules. Started in 2016, the IMODE project is funded by the European Interreg 2 Seas programme and co-financed by the European Regional Development Fund (ERDF). The project's overall objective is to bring together the specific transdisciplinary skills and experiences of partners (academic research groups, development agencies, SMEs) in order to provide the 2 Seas Area with strategic advantages for innovative pharmaceutical and medical applications. The IMODE project is motivated by an unmet need to develop solutions to addressing societal challenges to improve healthcare and provide novel and effective medication for various cardiovascular or gastro-intestinal conditions that lack or have inadequate treatment, all while keeping medical costs low.

Project partners:



 **project-imode.eu**

EVENT HOSTED BY **Biofit**

EUROPEAN DIAGNOSTIC CLUSTERS ALLIANCE

(EDCA) December 5th, 2018 | 10.30 am - 12.30 pm Rubens 1 Room



EDCA invites you to a round table to exchange on the contribution of **AI to next-generation diagnostics.**

About EDCA:

European Diagnostic Clusters Alliance – EDCA is the first European network serving the competitiveness of the medical diagnostic industry. It federates 8 European clusters and counts 350 companies.

The purpose of EDCA is:

- To promote competitiveness of European industry in the area of medical diagnosis. The association will enhance the synergies between academic research, clinical research, health authorities and diagnostic companies;
- To ease the growth of European SMEs in medical diagnostic;
- To promote the development of diagnostic clusters and competitiveness clusters in Europe;
- To promote cooperation between diagnostic clusters (inter-cluster) in order to help build European collaborative projects.

EDCA members:



EVENT HOSTED BY **Biofit**

PATHACOV

December 5th, 2018 | 9.30 am - 1.00 pm Hainaut Room



Head of Project: **Pr. Régis Matran**, Professor of Respiratory Physiology, Lille University Hospital

Early diagnosis of human diseases through analysis of VOC in exhaled breath

The challenge is to develop and implement an innovative methodology in the health field and in particular in the early diagnosis of bronchopulmonary cancers.

The project will enable all populations on both sides of the border, regardless of socio-economic level, to have access to a simple, non-traumatic method for early detection of bronchopulmonary cancer and other human diseases.

Programme Overview:

9.00 - 9.30 AM	Name badge pickup and Welcome coffee – BioFIT
9.30 - 10.30 AM	Introduction to the Interreg France-Wallonia-Vlaanderen Programme Pathacov Project and patient impact
10.30 - 11.00 AM	Networking break – BioFIT
11.00 AM - 1.00 PM	Specific markers VOC (Volatile Organic Compounds) Innovative tools for early diagnosis
1.00 - 2.00 PM	Lunch – BioFIT

Project partners:



EXHIBITOR LIST & FLOOR PLAN



- 3DNEUROSECURE A3
- A&M LABORATORY GROUP D7
- AFSSI**
- AEPODIA C3/5
- ANTINEO C3/7
- ASSOCIATION FRANÇAISE DES SOCIÉTÉS DE SERVICES C3
- ET D'INNOVATION C3/6
- CILQA SAS C3/3
- DIVERCHIM CDMO C3/9
- DRUGABIUS C3/2
- MITOLOGICS C3/1
- RD-BIOTECH C3/4
- ROOWIN C3/8
- SMALTIS D8
- ALCAMI CORPORATION F2
- ALIRA HEALTH C7
- APOLLO SCIENTIFIC C4
- ATLANPOLE BIOTHERAPIES** C4
- BIOGENOUEST B11
- ID2SANTÉ C4
- POLEPHARMA C4
- BACCINEX SA B6
- BIOPARTNER UK F9
- BLUEREG PHARMA CONSULTING... F10
- CARAKTERS F7
- CITOXLAB B10
- DELIVERY | DISCOVERY RESEARCH TOOLS**
- ATLANGRAM ia8
- MIND THE BYTE ia9
- PRODUCTION TOOLS**
- NUMAFERM ia10
- UGISENSE ia12

- CONSORTIUM FINDMED** C1
- INSTITUT CARNOT CALYM C1
- INSTITUT CARNOT CHIMIE C1
- BALARD CIRMAT C1
- INSTITUT CARNOT CURE C1
- CANCER C1
- INSTITUT CARNOT ICM C1
- INSTITUT CARNOT M.I.N.E.S. C1
- INSTITUT CARNOT PASTEUR MS C1
- INSTITUT CARNOT QUALIMENT@ C1
- INSTITUT CARNOT SMILES C1
- INSTITUT CARNOT C1
- TN@UPSACLAY C1
- INSTITUT CARNOT VOIR C1
- ET ENTENDRE C1
- TREMPLIN CARNOT12C C1
- TREMPLIN CARNOT IMAGINE C1
- CZECHINVEST B1
- DERMA E4
- ENTERPRISE LITHUANIA E8-F4
- ERDYN CONSULTANTS F6
- EU-JAPAN CENTRE FOR INDUSTRIAL COOPERATION B2
- FGK CLINICAL RESEARCH GMBH E2
- FIRALIS E5
- GEM FORLAB D9
- GET-INRA TRANSFERT D1
- HIRSCH & PARTNERS A4
- INSERM TRANSFERT A5
- IPAZ D3
- DIAGNOSTICS**
- CARMENTIX ia14
- SENCEIT ia15

- IPSI-DE E11
- LABORATOIRE DE TOXICOLOGIE DE L'INSTITUT PASTEUR DE LILLE F1
- LILLE NORTHERN FRANCE BIOCLUSTER**
- AMYLGEN D4/9
- EURASANTÉ D4
- E-ZYVEC D4/1
- GENOSGREEN D4/7
- HCS PHARMA D4/2
- IMMUNE INSIGHT D4/4
- INBRAIN PHARMA D4/3
- NUTRITION HEALTH LONGEVITY CLUSTER D4
- PAR'IMMUNE D4/5
- XPROCHEM D4/6
- YNCREA / SMMIL-E D4/8
- MÉTAGÉNOPOLIS - INRA D1
- METHYLDTECT APS E10
- MICROSYNTH AG A1
- NEURATRIS B5
- NEURO-SYS E12
- NIC | THE HEALTECH VENTURE BUILDER F14
- NOVA BIOMEDICAL C6
- OPEN R&D LITHUANIA E8-F4
- ORIGINAL PROCESS D6
- PHARMALEX A.R.C. A6
- PICOMTO F13
- PMC ISOICHEM D2
- PORSOIT C8
- THERAPEUTICS - CANCER IMMUNO-ONCOLOGY**
- LIFT BIOSCIENCES ia6
- ODIMMA ia4
- ONCOQR ML GMBH ia2
- OPSYON ia5
- PEPTOMYC S.L. ia3
- TUBULIS ia7

- R&D DATING FOR ANIMAL HEALTH AND INNOVATION - SIMV**
- INSTITUT CARNOT FRANCE E7-F3
- FUTUR ELEVAGE E7-F3
- SIMV E7-F3
- RÉSEAU SATT**
- AQUITAINE SCIENCE F5
- TRANSFERT F5
- AXLR F5
- IDF INNOV F5
- LINKSIUM F5
- QUEST VALORISATION F5
- PULSALYS F5
- RÉSEAU SATT F5
- SATT NORD F5
- SATT SUD-EST F5
- SALAMANDERU B3
- SCIOMICS GMBH E1
- SOLIADIS D5
- SOTERYAH IP E3
- UNIVERSITY OF BIRMINGHAM B4
- XELL AG B8
- XPRESS BIOLOGICS A2
- ZOETIS E6
- THERAPEUTICS - OTHER INDICATIONS**
- APIOS ia17
- ELASMOGEN LTD ia1
- MADAM THERAPEUTICS ia18
- MTACT ia13
- OP2LYSIS ia11
- PHYTEAU ia16

NEURO-SYS**STAND E12**Website: www.neuro-sys.com

Neuro-Sys is a French pharmacology company that relies on the expertise and experience of pharmacists and pharmacologists specialized in the R&D

of molecules used to treat neurodegenerative diseases such as AD, PD, HD, ALS...

It is specialized in *in vitro* screening of neuro active molecules and mode of action research. Neuro-Sys is a privileged partner in the pharmaceutical industry and for biotechnological companies developing neuroprotective and neurorehabilitation molecules.

A&M LABORATORY GROUP**STAND D7**Website: www.am-labor.de

Situated in the Heart of Europe the A&M Laboratory Group offers GxP compliant analytical services «Made in Germany». With 200+ dedicated scientists and technicians, state-of-the-art equipment and a 25+ year flawless track record in authority and client audits, A&M is your analytical one-stop shop, supporting the development of your drug from development to manufacturing. With clients ranging from single person start-ups to big pharma we could be the ideal partner for your outsourcing needs, too.

ALCAMI CORPORATION**STAND D8**Website: www.alcaminow.com

With seven sites across the globe, our combined capabilities include API development and manufacturing, solid state chemistry, formulation development, analytical development and testing services, clinical and commercial finished dosage form manufacturing (oral solid dose and parenteral), packaging, and stability services. To meet client needs around the world, Alcami fields state-of-the-art facilities at strategic locations in the United States and European Union.

AMYLGEN**STAND D4/9**Website: www.amylgen.com

Amylgen is a preclinical CRO offering in vivo models of psychiatric and neurodegenerative diseases. By combining a strong experience in behavior with expertise in biochemistry, neurochemistry and histology, Amylgen offers an integrated service. Your product can be evaluated on multiple aspects of brain function including memory, depression, anxiety.

All behavior effects may be supported by relevant analysis helping the understanding of the mechanism of action on brain health.

3DNEUROSECURE**STAND A3**Website: www.3dneurosecure.com

Multimodal bioinformatics more accessible to biologists, computer scientists, innovators and everyone in between.

AEPODIA**STAND C3/5**Website: www.aepodia.com

Aepodia is a solution provider specialised in the early development of drugs and medical devices up to clinical proof-of-concept (from preclinical to Phase 2). Aepodia offers expertise and innovative approaches to optimise the clinical development programmes of products as well as the management and operational execution of clinical studies carried out in multiple countries. With offices in Belgium and France, Aepodia is a recognised partner for pharmaceutical and biotechnology companies.

ALIRA HEALTH**STAND F2**Website: www.alirahealth.com

Alira Health is an international advisory firm providing integrated Transaction Services, Strategy and Medical Affairs consulting and contract research to companies in the Life Science industries. We partner with clients to identify the best roadmap for advancement and goal realization. We provide the right financial, scientific, clinical and marketing tools to empower their ideas, implement their strategies and succeed at every turn.

ANTINEO**STAND C3/7**Website: www.antineo.fr

Antineo accompanies clients in the preclinical development of novel anticancer agents. We provide strategic advice for preclinical development (choice of indications to focus on etc.), and expertise and in vitro, ex vivo and in vivo services aiming at characterising the mode of action and the anti-tumoral efficacy of new drugs.

We have a strong expertise in immunotherapies, and in the development and characterisation of original models for secondary resistances to gold standards.

APOLLO SCIENTIFIC **STAND C7**

Website: www.apolloscientific.co.uk

Established in 1993, Apollo Scientific Ltd is a leading supplier and manufacturer of Intermediate Building Blocks and Research Chemicals to the global R&D and Pharmaceutical market. We list a wide range of Fluorochemicals, Organic Intermediates, Biochemicals, High purity Inorganics and Spectroscopy consumables. In addition to our catalogue business we offer custom synthesis from our UK based lab.

ASSOCIATION **STAND C3**
FRANÇAISE DES SOCIÉTÉS
DE SERVICES ET D'INNOVATION

Website: www.afssi.fr

The «Association Française des Sociétés de Services et d'Innovation (AFSSI)», French Association of Outsourcing and Innovative Companies in the field of Life Sciences was born in 2012 to gather companies established in France and providing R&D services to industrial or academic partners. AFSSI represents over 130 companies involved in a dual business model, investing a significant part of their revenues in R&D to update and broaden their technology offering in order to run research programs.

AXLR **STAND F5** **BIOGENOUEST** **STAND B11**

Website: www.axlr.com

AxLR is a technology transfer acceleration company. Our specialty is helping innovative projects derived from academic research reach maturity and commercialization. We work with the main public-sector research laboratories in France's Mediterranean area in Occitanie, one of the most dynamic locations in Europe, with over 200 laboratories and some 12,000 researchers.

Website: www.biogenouest.org

Biogenouest combines expertise, capability and equipment through a network. Our team strive to develop technology's platforms drawing on a coordinated approach and on various funding streams and enable all the scientific community (labs and business) to gain access to the services and resources. The network brings together 34 technology core facilities about Genomics, Proteomics, Functional exploration, Bioimaging, Structural & Metabolomics analysis, and Bioinformatics.

AQUITAINE SCIENCE **STAND F5**
TRANSFERT

Website: www.innovations-aquitaine.com

Aquitaine Science Transfert is the Technology Transfer Office for the south west of France, covering 5500 researchers and 135 laboratories. We represent the regional academic research labs: Bordeaux University, INSERM, CNRS, Pau University, Bordeaux Polytechnic Institute... Since our creation in July 2012, we have signed 48 license agreements, patented 285 technologies and created 17 startups. Health, wellness and medical devices represent a key business in which our company is highly involved.

ATLANPOLE **STAND C4**
BIOETHERAPIES

Website: www.atlanpolebiotherapies.eu

Atlanpole Biotherapies is a competitiveness cluster involved in the medicine of tomorrow. It is focused for the development of new therapies, immunotherapy, regenerative medicine and radiopharmaceuticals, on the bio-medicine value chain from target discovery to clinical evaluation, completed by digital and nutrition approach. The projects of our network of 235 members, both academic and industrial, show the excellence of our expertise in personalized medicine.

BACCINEX SA **STAND B6** **BIOPARTNER UK** **STAND F9**

Website: www.baccinex.com

Baccinex is a Swiss based fill&finish CDMO specialized in development and manufacturing of sterile & lyophilized clinical material for pre-clinical, Phase I, II and III as well as commercial supply batches. Our expertise is forged by 15 years of sterile clinical and commercial material manufacturing.

We are a one-stop flexible structure CDMO with a batch size from 500 to 12'000 vials on one production line. We also propose in-house sterile ampoules manufacturing.

Website: www.biopartner.co.uk

BioPartner UK is the accredited trade organisation that provides practical support and international promotion to UK Life Sciences companies, who wish to grow their business overseas. BioPartner signposts to UK expertise and leads delegations to promote the UK presence at major international biopharma conferences. By operating in partnership with the UK government and event organisers, BioPartner assists all UK companies with access to government grants and heavily discounted entry fees.

**BLUREG PHARMA
CONSULTING**

STAND F10

Website: www.blureg-group.com

BlueReg – Your regulatory partner to Europe and beyond

BlueReg is a consulting company offering strategic regulatory advice to life sciences companies. We provide flexible solutions or operational platforms to meet your company's needs from product development, registration through to launch & product maintenance activities.

Our internal experts are committed to support biotech and pharma companies with the best scientific & regulatory advice to transform innovation into a successful product.

CILOA SAS

STAND C3/6

Website: www.ciloa.fr

Ciloa is an exosome-based R&D powerhouse that customizes exosomes to contain any chosen proteins embedded in their membrane & inside their cytosol. Exosomes are naturally tailored *in vivo* by cells and membrane proteins complexes are sorted with their fully native conformation.

Natural properties of exosomes combined with Ciloa disruptive technology allow to develop I) antibodies against challenging targets; II) exosome-based therapeutic vectors; III) virus & adjuvant free vaccines

CONSORTIUM FINDMED

STAND C1

Website: www.findmed.fr

FINDMED is a consortium of French academic Carnot institutes devoted to human and animal Health. Covering the whole R&D value chain, its role is to support Small Medium-sized Enterprises development by facilitating access to academic research and technological resources. It gathers 7 leading institutes in Health (Vision institute, Institut Pasteur, Institut Curie, ICM, INRA, CALYM, Imagine) and 5 more in chemistry, formulation and digital (Chimie Balard Cirimat, I2C, M.I.N.E.S, Smiles, TN@UPSaclay).

DERMA

STAND E4

Website: www.derma2seas.eu

The Interreg 2 Seas project DERMA aims to develop new interventions for the management and treatment of dermal ulcers and related skin conditions. By addressing market and patient need, the project will deliver advanced technologies ready for exploitation by industry to manufacture improved products for the treatment of patients. The objectives are to design, develop and evaluate an odour-absorbing, antimicrobial wound dressing and a dressing with diagnostic capability to indicate wound status.

CARAKTERS

STAND F7

Website: www.carakters.com

Carakters is a boutique innovation-focused law firm based in Paris. By using original methods (results chart, risks mapping), Carakters works as project manager for life sciences actors leading innovative projects in drug discovery, connected devices and biotechnologies, with a focus on public-private consortia, industry-academia collaborations and technology transfers. Carakters also acts as R&D contract manager and offers its clients risks assessing tools to protect their confidential assets.

CITOLAB

STAND B10

Website: www.citoxlab.com

With nine facilities located in France, Canada, the US, Denmark and Hungary, Citoxlab offers a comprehensive range of preclinical services to meet the needs of pharmaceutical, biotechnology, medical device, chemical and agrochemical companies. Citoxlab carries out studies in general and reproductive toxicology, immunology, pharmacology and preclinical and clinical bioanalysis/biomarkers. With Solvo joining the Group, products and services in the field of transporters and DDI are now available.

CZECHINVEST

STAND B1

Website: www.czechinvest.org

CzechInvest, the investment and business development agency of the Ministry of Industry and Trade, works with businesses based in the Czech Republic to support their development and encourages overseas companies to look at the Czech Republic as their partner of choice. The agency helps its Czech and international customers by providing services that range from information provision and consultancy to implementation of business development programmes.

DIVERCHIM CDMO

STAND C3/3

Website: www.diverchim.com

DIVERCHIM CDMO is a dedicated manufacturer of Active Pharmaceutical Ingredients required in small quantities (From tens of grams up to hundreds of kilograms). Based on its expertise in terms of chemical synthesis as well as documentation and regulatory aspects for commercial API manufacture, DIVERCHIM has developed over the last years its offer for pre-clinical and clinical needs for biotech and pharma companies.

DRUGABILIS**STAND C3/9**Website: www.drugabilis.com

DRUGABILIS is an established CRO specialized in pharmaceutical drugability of R&D compounds, including cytotoxic drugs. Our expertise includes API Solid Form Optimization (salts, polymorphs, cocrystals) & Early Formulation, ranging from animal formulation (efficacy, PK, Tox) to early clinical formulation feasibility assessment (oral low soluble, injectable, ocular, dermal, vaginal ...). Our recent relocation to new facilities allowed us increasing our capacities for new projects and clients.

ERDYN CONSULTANTS**STAND F6**Website: www.erdyn.com

Erdyn is a pure player of innovation. Erdyn is a leader consulting company specialized in innovation. We support our clients from strategies set up to their operational implementation to sustain growth and competitiveness through innovation. We offer support for:

- Set up and management of collaborative projects
- Innovation marketing and business development
- Technological and scientific states of the art
- Technology/opportunity scouting

EURASANTÉ**STAND D4**Website: www.eurasante.com

Eurasanté is an incubator, a technology transfer tool and a cluster manager all at once, in the biotech, medtech, nutrition and healthcare fields in Northern France. It helps French and foreign companies, entrepreneurs, scientists and clinicians with their innovations and development projects. The regional network includes more than 1,000 companies working in the Life Sciences and Healthcare fields. The Health field in the Hauts-de-France region has a total of 28,000 employees.

FGK CLINICAL RESEARCH GMBH**STAND E2**Website: www.fgk-cro.com

FGK Clinical Research GmbH is a Europe-based full service Contract Research Organization with offices in Germany (HQ), Poland, Czech Republic, Hungary and UK. We provide full service for Phase I - IV clinical studies. FGK has the right size to handle multi-country, multi-center studies with hundreds of patients or single country studies with a few patients, but is still small enough to guarantee a personal service to the sponsor.

ENTERPRISE LITHUANIA**STAND E8/F4**Website: www.enterpriselithuania.com

Enterprise Lithuania is a non-profit agency under Ministry of Economy established to promote entrepreneurship, support business development and foster export. Their mission is to support the establishment and development of competitive businesses in Lithuania and to foster the country's exports by facilitating cooperation with partners' networks and providing quality training, consultancy, market analysis, and business-partner search services.

EU-JAPAN CENTRE FOR INDUSTRIAL COOPERATION**STAND B2**Website: www.eu-japan.eu

The EU-Japan Centre for Industrial Cooperation is a unique venture between the European Commission (DG GROW) and the Japanese Government (METI). The EU-Japan Centre manages matchmaking missions, information seminars and researches, managerial training courses, student placement programmes and other services all designed to help bring European and Japanese businesses together.

E-ZYVEC**STAND D4/1**Website: www.e-zyvec.com

e-Zyvec is your new expert in DNA vector design and production. Using our proprietary DNA assembly technology we modularly assemble any kind of vector to fit your specific requirements. We provide our services for genome editing, protein or cell engineering, multiple gene expressions. We can also handle any custom demand in vector creation. You design your experiment, we create the fitting tools. We are here to set your scientific ingenuity free!

FIRALIS**STAND E5**Website: www.firalis.com

Firalis is a biotechnology company with a mission to improve disease outcome, therapeutic decisions and generate savings in healthcare through biomarker discovery, development and regulatory qualification that ultimately leads to biomarker-based diagnostics. Firalis develops and markets RUO (Research-use-only) and IVD (In-vitro-diagnostic) kits in the field of cardiovascular, inflammatory, autoimmune and neurology disorders.

GEM FORLAB**STAND D9**Website: www.gemforlab.com

GEM FORLAB is a scientific service provider devoted to supporting companies belonging to the Life Sciences field. GEM FORLAB services are aimed to solve problems linked to quality, safety, efficacy of products/compounds subjected to development phase and to identify customized solutions to specific R&D issues.

Thanks to its scientific platforms, the quality system, the competences and the versatility of the team to meet customer needs, GEM FORLAB is the partner of choice of company which requires the capability to manage and solve complex problems following regulatory requirements.

GET-INRA TRANSFERT**STAND D1**Website: www.get.genotoul.fr/get-it/

GeT-IT provides genomics services based on the knowledge and expertise of the French National Institute for Agricultural Research (INRA). Our service allows us to offer multi-technology approaches to answer some biological questions. We are able to perform the complete workflow in-house from the samples to the data analysis thanks to our own instrumentation (rapidity and flexibility) and thanks to a team dedicated to industrials and private companies.

HIRSCH & PARTNERS**STAND A4**Website: www.hirsch-iplaw.com

Hirsch & Partners is an Intellectual Property law firm set up in 1968 providing worldwide full IP services (patent, trademarks, copyright, designs & licensing), allowing clients to meet their intellectual property needs.

IDF INNOV**STAND F5**Website: www.idfinnov.com

IDF Innov is a private TTO with exclusive rights on technology detection, seeding and commercialization over a vast academic territory in the Paris Metropolitan Area. This territory is strong of more than 20000 researchers, clinicians and PhDs, and hosts the strongest cluster for clinical expertise in France.

IDF Innov operates as a seeding funds and is committed to facilitate the due diligences for IP related private-public partnering and start-up creation.

GENOSCREEN**STAND D4/7**Website: www.genoscreen.com

Expertise in genomics and bioinformatics
GenoScreen, pioneering company in genomics and bioinformatics, has developed a portfolio of activities devoted to DNA molecule exploration and exploitation.

- Multi-specialist provider serving academic and industrial R&D
- Laboratory of high precision analyses and tests in genomics and microbial metagenomics
- A trusted partner to facilitate and accelerate R&D projects
- Provider of solutions and tools dedicated to the microorganism's detection and analysis

HCS PHARMA**STAND D4/2**Website: www.hcs-pharma.com

HCS Pharma provides services in pre-clinical *in vitro* research in high content cell imaging (HCS/HCA).

Expertise:

- *In vitro* tests in pharmacology & toxicology in 2D & in 3D culture in medium / high throughput.
- BIOMIMESYS® (proprietary technology for 3D cell culture): unique, natural & versatile scaffold based on hyaluronic acid, biofunctionalized with other extracellular matrix components.
- Onco-Neuro-Hepato-Adipo-Dermato-Microbiota-Antibio -Tox-quantitative Imaging
- Human & animal Health

ID2SANTÉ**STAND C4**Website: www.id2sante.fr

ID2Santé is a technology innovation centre operating in the Bretagne region (Western France). It is also the regional representative of the Atlanpole Biotherapies competitiveness cluster.

It is in close contact with regional researchers and companies from the health sector and helps forge partnerships to support R&D projects and to develop innovative health products.

IMMUNE INSIGHT**STAND D4/4**Website: www.immune-insight.com

Immune insight is a CRO which carries ex-vivo and in-vivo preclinical assessment of new active molecules on the immune system in the fields of Cancer, Autoimmune and Inflammatory diseases. Immune Insight has a strong expertise in Treg full analysis but provides also a full range of services including phenotypic, metabolic, functional, recruitment and conversion analysis of several other human immune cells (monocytes, NK, macrophages, B and T cells, Neutrophils...).

INBRAIN PHARMA **STAND D4/3**

Website: www.inbrainpharma.strikingly.com

InBrain Pharma is a biotechnology start-up, spin-off from academic laboratory, developing innovative solutions against neurodegenerative diseases based on Brain Infusion. Brain infusion is the direct administration of drug inside the central nervous system. Controlled administration in the CNS allows a precise, continuous and targeted administration which increases the efficiency and the safety of the treatments. Our first patented technology is administration of dopamine for Parkinson's disease.

**INSTITUT CARNOT
CALYM** **STAND C1**

Website: www.calym.org

The CALYM Carnot Institute brings together 15 research teams specialized in lymphoma, first blood cancer. This academic consortium, without international equivalent, aims at accelerating innovation and its transfer in the lymphoma treatment and diagnosis through a unique R&D offering: from the identification of new biological targets to registration clinical trials.

**INSTITUT CARNOT
CURIE CANCER** **STAND C1**

Website: www.curie.fr

Curie Cancer is built on the expertise of Institut Curie (3200 people), a leading comprehensive cancer center in Europe and a world-renowned hospital group. Curie Cancer offers to industrial partners the ability to setup research collaborations from therapeutic target identification to clinical validation.

**INSTITUT CARNOT
ICM** **STAND C1**

Website: www.icm-institute.org/fr/

The ICM Carnot Institute is comprised of a research center, a center for clinical investigation and an incubator for start-ups dedicated to finding solutions for diseases and disorders of the central nervous system. Headquartered in a 22,000 sqm building equipped with the latest technological core facilities, our goal is to promote strong partnerships as a means to accelerate translational research and respond to industry actors unmet needs.

INSERM TRANSFERT **STAND A5**

Website: www.inserm-transfert.fr

<https://technology-offers.inserm-transfert.com/>

As a private subsidiary of Inserm, Inserm Transfert manages economic and societal value creation and the transfer of knowledge from Inserm research laboratories to companies contributing to promote human health innovation.

**INSTITUT CARNOT
CHIMIE BALARD CIRIMAT** **STAND C1**

Website: www.carnot-chimie-balard-cirimat.fr

The Chimie Balard Cirimat Carnot Institute provides companies with R&D support in Chemistry, Materials and Processes. We offer innovative solutions to our partners, drawing upon our expertise in green chemistry and processes and in materials with enhanced properties. The comprehensive coverage by our research groups and the access to four state-of-the-art technological platforms allows us to meet any challenge from the energy, health, cosmetics and transport industries.

**INSTITUT CARNOT
FRANCE FUTUR ELEVAGE** **STAND E7-F3**

Website: www.francefuturelevage.com/fr/

Carnot Institute Livestock Industry for the Future provides R&D competences to livestock sector businesses, mobilizing three main levers for multiefficient, sustainable and profitable farming: health, nutrition and breeding systems and animal genetics. It brings together actors from agro-veterinary research from INRA and its academic partners with an international visibility and three Agricultural Technical Institutes leaders in the breeding services.

**INSTITUT CARNOT
M.I.N.E.S.** **STAND C1**

Website: www.plateforme-gala.com

Composed of Armines and 8 engineering schools, the M.I.N.E.S Carnot Institute is built on a multi-disciplinary academic foundation enhanced by a 50-year heritage of providing solutions to meet the needs of the socio-economic players. Truly inspirational for companies seeking innovation, the M.I.N.E.S Carnot Institute draws its strength from its motivation to break down scientific barriers.

**INSTITUT CARNOT
PASTEUR MS****STAND C1**

Website: www.research.pasteur.fr/fr/program_project/ms-carnot/

Through an interdisciplinary research and integrative approach, Pasteur MS, located at the heart of Institut Pasteur, Paris, aims to provide a better understanding of the fundamental mechanisms of host/ pathogen interactions and microbes' impacts on human health. Its ultimate goal is to foster the development of innovative products, in partnerships with biotechnology and healthcare industries, in the therapeutic, diagnostic and vaccines fields.

**INSTITUT CARNOT
SMILES****STAND C1**

Website: www.carnot-smiles.fr

The Carnot SMILES is a public research institute which aims at making the most of the power of applied mathematics, through collaborative research, in order to foster innovation within companies. Made up of multi-disciplinary teams, the institute accompanies its industrial partners in their technological challenges regarding bioscience (among other themes): molecular dynamics simulation, growth of cells population modeling, wound healing modeling, protein-protein interaction, metagenomics.

**INSTITUT CARNOT
QUALIMENT®****STAND C1**

Website: www.qualiment.fr

Meeting consumer expectations with regards to the sensory and nutritional quality of foods as part of a sustainable food process is a major challenge in terms of innovation. As such, the Qualiment® Carnot Institute implements scientific and technological resources required to support companies in their projects in the field of improvement and development of food products.

**INSTITUT CARNOT
TN@UPSACLAY****STAND C1**

Website: www-list.cea.fr

The Institut Carnot Technologies Numériques @ UPSaclay (TN@ UPSaclay), spearheaded by List, an institute of CEA Tech, conducts smart digital systems R&D covering four main areas: Technologies for manufacturing, Cyber-Physical Systems, Data intelligence, Technologies for personalized medicine. At the crossroads of basic research and industrial R&D, this work addresses the field of information and communication science and technology.

**INSTITUT CARNOT
VOIR ET ENTENDRE****STAND C1**

Website: www.fondave.org

The Voir et Entendre Carnot Institute represents one of the most important centers in neurosensory research. It harbors, aside from the research center, a clinical investigation center, a rare disease reference center and an incubator. The institute is designed as a place of exchange gathering on the same site patients, clinicians, researchers and industrials in order to accelerate technological innovations, while bringing solutions to unmet needs of people with visual and hearing impairments.

IPSIDE**STAND E11**

Website: www.ipside.com

For 40 years, IPSIDE has been a 100% focused on intellectual property, from the acquisition of rights to their defense and commercialisation. We transform your creativity into economic strength ! Based in France, the USA and China, our team of 80 employees offers holistic Intellectual Property strategies adapted to the needs of each of our clients. Every year, we file about 1000 new patent applications in addition to thousands of trademark registrations around the world, for nearly 2000 clients.

IPAZ**STAND D3**

Website: www.ipaz.eu

IPAZ is an intellectual property law firm committed to its clients, who they are and what and their business is. With an entire department fully dedicated to the health sector, specialized in Life Sciences and Biotech, we provide tailor-made solutions and IP services – prosecution, strategy & valuation - for building strong patent portfolios and thereby creating valuable assets

**LABORATOIRE
DE TOXICOLOGIE
DE L'INSTITUT PASTEUR DE LILLE****STAND F1**

Website: <https://mutagenese.pasteur-lille.fr/accueil/>

The toxicology laboratory of Institut Pasteur de Lille, headed by Fabrice Nesslany, performs genotoxicity, mutagenicity, toxicity and endocrine disruptor assessment of many types of substances (human and animal drugs, cosmetics, chemicals, nanomaterials...), under GLP or in screening. Our experts advise you in the choice of the test protocols, the interpretation of the results and follow-up studies. The department is also implicated in national and European research projects.

LINKSIUM**STAND F5**Website: www.linksium.fr

Linksium selects and reinforces disruptive technologies generated by deep public research results in Grenoble Alps area. All funded projects have valuable intellectual property inside. At a glance, business players can easily discover and scout most promising technologies and startups that may be the next game changers of the market. Linksium funded 115 technologies with 21 M€ over three years. 30% of its technologies portfolio (licenses or startups) push back scientific boundaries in health field, and specifically for medical devices.

METHYLDETECT APS**STAND E10**Website: www.methyldetect.com

MethylDetect's ApS, products help the researchers to study the biology and significance of methylation changes in disease pathology. Our ambition is to bring our technology into routine use in in-vitro diagnostics for early disease detection, disease risk assessment and personalization of the treatment.

MITOLOGICS**STAND C3/2**Website: www.mitologics.com

Mitologics is an innovative biotechnology company specialized in detection of mitochondrial dysfunctions. The company offers compound screening services on healthy and pathological mitochondria and cultured cells: predictive toxicity assays (MiToxView® and SeaHorse®) to detect mitochondrio-toxic compounds presenting risks in human; efficacy assays to identify tumor specific-compounds and their MoA (MitoPathway®); mitochondrial targeting assays (protection against oxidative stress; MitoXpert®).

NEURO-SYS**STAND E12**Website: www.neuro-sys.com

Neuro-Sys is a French pharmacology company that relies on the expertise and experience of pharmacists and pharmacologists specialized in the R&D of molecules used to treat neurodegenerative diseases such as AD, PD, HD, ALS... It is specialized in *in vitro* screening of neuro active molecules and mode of action research. Neuro-Sys is a privileged partner in the pharmaceutical industry and for biotechnological companies developing neuroprotective and neurorehabilitation molecules.

MÉTAGÉNOPOLIS - INRA**STAND D1**Website: www.mgps.eu

MétaGénoPolis is a Centre of Excellence in Human and Animal microbiome using standardized high throughput DNA metagenomics analyses.

Our 50 years expertise is recognized worldwide thanks to the 80+ high impact publications of our researchers (S. D. Ehrlich, J. Doré, H. Blottière).

Our goal is to understand host-microbiome interactions. Our collaborations with health, pharmaceutical, food and animal industries enable the translation of the most recent discoveries into health-related products.

MICROSYNTH AG**STAND A1**Website: www.microsynth.ch

Microsynth (founded in 1989) is a leading European company in the area of nucleic acid synthesis & analysis. The main activities are divided into following three business areas: DNA/RNA Synthesis DNA/RNA Analysis and Sequencing Contract Research/Outsourcing For almost three decades, the company's objective has been to serve its customers by delivering products and services of the highest quality, on time and with outstanding service.

NEURATRIS**STAND B5**Website: www.neuratris.com

NeurATRIS is a French translational research infrastructure dedicated to translational neuroscience and aimed at validating new treatments / biomarkers for neurodegenerative diseases.

NeurATRIS gives access to its world-class preclinical / clinical facilities and cutting-edge equipment (neuro-imaging, biotherapy, cell and animal models, behavior, aptamers, etc.) to life science actors through a one-stop shop.

**NLC
THE HEALTHTECH VENTURE BUILDER****STAND F14**Website: <https://nlc.health/>

We want to make impact on healthcare, so only the best healthtech innovations lead to a NLC spin-off. We bring together the best tech, the best people, and the best capital to bring healthtech to the patient. We designed a model to create early stage healthtech ventures. We work with leading European research institutes, first-class hospitals, successful entrepreneurs, world-class capital, innovative SMEs, global market leaders, and the whole range of service providers. We bring science to life!

NOVA BIOMEDICAL **STAND C6**

Website: www.novabio.us/fr/

Nova manufactures automated analyzers for cell culture and fermentation monitoring. We employ over 1,000 people, with sales and service subsidiaries in eight countries and distributors in more than 90 additional countries. Our modular BioProfile FLEX provides key chemistries and gasses and is expandable to include Cell Density and Cell Viability, Osmolality, and IgG or Ph or Phosphate results with the same sample and a single data output stream.

OPEN R&D LITHUANIA **STAND E8-F4**

Website: <http://apc.mita.lt>

Open R&D Lithuania network is a platform of cooperation between open access R&D centers of 14 Lithuanian Universities, 13 Public Research Institutes as well as 7 Science and Technology parks. Six of these institutions specializes in Life Sciences and Biotech area and has modern R&D facilities and close collaboration between scientific and clinical units. Concentration of resources allows to create new technologies and products as well as provide R&D services.

OUEST VALORISATION **STAND F5**

Website: www.ouest-valorisation.fr

Ouest Valorisation – Office of Technology Transfer (OTT) was created in the “Future Investments” project call managed by Ministry of Higher Education and Research. Its aim: to propose to companies attractive innovation means from the public research. Ouest Valorisation’s team simplifies the access of the companies to research laboratories in order to develop good collaborative projects or to get access to high professional skills and high level scientific equipment.

PHARMALEX A.R.C. **STAND A6**

Website: www.pharmalex.com

Pharmalex is one of the most experienced providers for Development Consulting, Regulatory Affairs, Quality Management & Compliance and Vigilance, Epidemiology & Risk Management activities, associated with medicinal products and medical devices. Our global teams of experts will take you from early strategic planning and CMC/NC activities to clinical development, via regulatory agency advices towards market approvals and/or product maintenance support.

NUTRITION HEALTH **STAND D4**
LONGEVITY CLUSTER

Website: www.nhl-cluster.com

The Nutrition Health Longevity (NHL) Cluster is a dynamic network at the intersection of health, biotechnology and nutrition. The NHL Cluster aims to connect academia and industry partners around R&D projects. It focuses on the fields of prevention and treatment of lifestyle-related diseases, such as metabolic and cardiovascular pathologies, neurodegenerative diseases and inflammatory bowel diseases. Its goal is to gather and support players from the health and food sectors in designing, developing and financing their future products and processes.

ORIGINAL PROCESS **STAND D6**

Website: www.original-process.com

Original Process, specialist of the health of the animals digestive microbiota for 40 years. From its own technology FAP®, Original Process develops exclusive Processes for unique ProbioactiFAP® products, naturally rich in prebiotic and postbiotic, for a better digestive Health and immunity. Original Process proposes its R&D and regulatory services to the distributors (vet and feed) and produces as well on its own brand name as under private label. For the design product and the evidence efficiency, Original Process develops and pursues its studies (*in vitro*, preclinical and clinical trials) in collaboration with scientific, medical and vet partners.

PAR’IMMUNE **STAND D4/5**

Website: www.parimmune.com

Par’Immune is a French company leveraging 20 years legacy of academic research on a parasite-derived protein, P28GST, to develop therapeutic strategies toward aggressive inflammatory autoimmune diseases. Besides its safety profile validated in several clinical trials, the immunomodulatory potential of P28GST has been demonstrated in preclinical models of inflammatory diseases. Our drug candidate is under evaluation in a Phase 2a clinical trial in Crohn’s disease.

PICOMTO **STAND F13**

Website: www.picomto.com

Picomto provides web and mobile solutions to help pharmaceuticals companies to digitize their Work Instructions and Standard Operating Procedures in compliance with GMP and FDA Standards (21 CFR Part 11). This is a digital and connected tool for making sure your operators have taken into account the latest version of SOP/WISOP to increase your audit trail level. It ensures your processes to be secured, repeatable and allows you to track all the operations with field data collection.

PMC ISOCHEM**STAND D2**

Website: www.pmcisochem.fr

PMC Isochem offers contract research, custom manufacturing and catalogue products for Pharmaceutical companies worldwide. Our offer addresses three areas: - CDMO services: GMP industrial exclusive custom synthesis and provides tailor made services from development to production, including route selection. - Drug delivery solutions: TPGS-1000 NF USP for poorly soluble drug formulation and Polypeptides based solution for Nano Encapsulation and Polymer Drug - Generic APIs: 20 generic API

PORSOLT**STAND C8**

Website: www.porsolt.com

Porsolt, a long established, AAALAC accredited and fully GLP compliant, preclinical CRO, has been providing efficacy and safety pharmacology services for over 30 years, covering the drug development process from early screening thru regulatory submission.

Porsolt provides *in vitro* assays (high throughput screening, high content analysis, and high content histology) and physiopathological models in multiples species and multiple disease areas, tailored solutions and bespoke model development.

RD-BIOTECH**STAND C3/1**

Website: www.rd-biotech.com

RD-Biotech is a French CRO offering a wide range of custom services and products in Biotechnology:

Bioproduction & purification: Monoclonal and recombinant antibodies (murine, rat, humanized, Fab, ScFv ...) Recombinant proteins, Plasmids, cells.

Development: Hybridoma, transfection and cell lines, Vector, Chimeric and Humanized antibodies, phage display (mouse, llama)

Analytical services: Immunoassay, OCTET, bioassay

FastELISA kits: IgG quantification (mouse, human, rat), Protein A detection.

ROOWIN**STAND C3/4**

Website: www.roowin.com

Roowin is a privately owned Contract Research Organisation (CRO) headquartered in Riom (Auvergne), France. Its core business being in high value added fine chemistry, Roowin offers a large range of chemical services. We support our customers and partners to advance their drug candidates from early research phase up to licensing out API in phase II or to the Market for small batches (about 20 kg).

POLEPHARMA**STAND C4**

Website: www.polepharma.com

Polepharma is the first pharmaceutical alliance in Europe, covering 3 regions (Centre-Val de Loire, Normandie and Ile de France) that ensures 53% of drug production in France. Its network relies on a team of experts who aim at stimulating industrial and economic development of the pharmaceutical industry with actions that promote competitiveness, innovation, attractiveness and the "Made in France".

PULSALYS**STAND F5**

Website: www.pulsalys.fr

PULSALYS is a French Technology Transfer Office (TTO), created in 2013 with a public funding of 57 M€, committed in detecting high-potential research results from the laboratories of Lyon & St Etienne, and turning them into strong innovations for companies, or into high tech startup businesses.

RÉSEAU SATT**STAND F5**

Website: www.satt.fr

In France, SATTs have the challenging mission to accelerate the transformation of French research into innovations. Their aim is to enhance the value and to accelerate the process of technology transfer from publically funded research toward industry. SATTs evaluate, market and license technology from French Universities and Public Research Organisations. SATTs have become a major actor of economic development to reinforce company competitiveness, with an emphasis on SMEs and start-ups.

SALAMANDERU**STAND B3**

Website: www.salamanderu.com

salamanderU regenerates conventional practices in regenerative therapies market with a tailor made approach:

- ATMP production unit: salamanderU engineers, designs, builds, installs and maintains your facility & Mobile units (lab in a truck or clean room fully integrated in container)
- Voice Electronic Batch Record: Increase your productivity & reduce risks with Smartreg
- Isolator systems: Synthetic resin isolator for aseptic confined operation
- Quality Management System: Achieve your QMS & Consultancy

SATT NORD**STAND F5**Website: www.sattnord.fr

SATT Nord is a growth-generating tool for valorisation serving researchers and responding to the economic and societal needs for technology transfer. Thanks to a multidisciplinary team of professionals (experts in the various fields of research, project managers, experts in intellectual property, legal experts), SATT Nord ensures the detection of projects, their maturation and the protection of the intellectual rights and even up to their commercialisation through transfer.

SCIOMICS GMBH**STAND E1**Website: www.sciomics.de

Sciomics offers a high-content analysis services for combined phosphorylation / ubiquitinylation and protein analysis to investigate pathway activity, disease mechanisms, drug mode-of-action or discover novel drug targets and biomarkers. Currently, more than 1,000 proteins, many being keyplayers in biomedical pathways are analysed in parallel by our immuno-based antibody array platform. The platform guarantees robust and reproducible results which can easily be translated in clinical assays.

SMALTIS**STAND C3/8**Website: www.smaltis.fr

SMALTIS is a CRO specialized in Microbiology and Molecular Biology. By constructing genetically modified bacteria and providing scientific and technical services to understand the characteristics and mechanisms involving microorganisms we help our clients to accelerate the development of their biological products and drugs. Our areas of expertise are the development of new anti-infective compound, the study of microbiota and the setting-up of tools and methods for Bioproduction process.

SOTERYAH IP**STAND E3**Website: www.soteryah.com

European IP Attorneys, experts in patents, trademarks, and all other intellectual property rights, in terms of acquisition, exploitation and defense, in your country, in Europe and internationally. We may also assist you to remove technological barriers and optimize your production based on technical information interallia from non-enforceable patents.

SATT SUD-EST**STAND F5**Website: www.sattse.com

SATT Sud-Est is a key player in regional economic development associated with innovation. Its core business – technology transfer – consists of protecting, developing and licensing the results of research from public laboratories in the South & Corsica Regions to the socio-economic world. Its goal is to help companies acquire reliable innovations that are better suited to the industrial challenges they face.

SIMV**STAND E7-F3**Website: www.simv.org

SIMV - French association of animal health industry
The French association for animal health industry (SIMV) represents and federates 40 manufacturers and marketers on the French market of medicines and reagents for pets and for farm animals.

SOLADIS**STAND D5**Website: www.soladis.com

Soladis is a consulting and service company specialized in health data.
We developed our expertise on the three challenges of data :
- collection and storage (through IoT, sensors, biosensors, CRF/eCRF, surveys,...),
- processing and analysis (data management, statistics, biostatistics, data science, machine learning),
- valorization (clinical reports, dashboards, data visualisation, algorithms,...).
Our CRO team can also support pharma, biotech, MD-IVD...clinical studies from A to Z.

TREMLIN CARNOT I2C**STAND C1**Website: www.i2c.normandie-univ.fr

The associated Carnot I2C brings together 8 research entities from Normandy on the 2nd territory of the chemical industry in France. With a strong expertise in synthesis, analysis and formulation, I2C capitalizes on this chemistry value chain as a privileged partner to support innovation for the pharmaceuticals, fine chemicals, food, bioresources, cosmetics, energy and environmental sectors industries.

**TREMLIN CARNOT
IMAGINE**

STAND C1

Website: www.institutimagine.org

Within Necker-Enfants malades Hospital in Paris, Imagine Associated Carnot's brings together a large number of genetic diseases' specialists with the aim to better understand these disorders to better diagnose and treat them. Its patient-centered organization and the close collaboration between clinicians and researchers implement a unique translational model that facilitates research collaborations and the establishment of new therapeutic strategies with the industrial partners.

XELL AG

STAND B8

Website: www.xell.ag

As a leading company, Xell provides highly-efficient solutions in cell culture technology. With a strong focus on cell culture medium and feed development, we have continuously strengthened our technology. In addition to a broad analytical portfolio, we offer customized formulations and high-performance catalog products for CHO, human and Hybridoma cells including special applications (e.g. transfection, virus production): Chemically defined, animal origin-free and suitable for GMP applications.

XPROCHEM

STAND D4/6

Website: www.xprochem.com

Xprochem specializes in the chemical synthesis of complex proteins (up to ~400 a.a.) that cannot be produced by recombinant methods or are too difficult to synthesize or purify with an acceptable yield. We can also include a variety of finely targeted substitutions, i.e. glycosylations, pegylations and unnatural amino acids.

ZOETIS

STAND E6

Website: www.zoetis.com

Zoetis is the leading animal health company, dedicated to supporting its customers and their businesses. Building on more than 60 years of experience in animal health, Zoetis discovers, develops, manufactures and markets veterinary vaccines and medicines, complemented by diagnostic products, genetic tests, biodevices and a range of services. Zoetis serves veterinarians, livestock producers and people who raise and care for farm and companion animals with sales in more than 100 countries.

**UNIVERSITY OF
BIRMINGHAM**

STAND B4

Website: www.birmingham.ac.uk

Research, collaboration and innovation that's transforming our world for the better. Our researchers work with industry partners from discovery science across the translational spectrum, to improve patients' lives and positively impact their care. We collaborate with the pharmaceutical, medical diagnostic and medical device sector, along with many biotech companies.

XPRESS BIOLOGICS

STAND A2

Website: www.xpress-biologics.com

Xpress Biologics is a contract development organization specialized in the production of Biologics (proteins, antibody fragments and DNA) for preclinical applications specific to the therapeutic, vaccine and diagnostic markets.

Our mission is to enable the transition of projects from R&D to clinical manufacturing. The production scale (from 100 mg to 50 g) and the quality of the biologics (R&D and GLP grade) are adapted for *in vitro* and *in vivo* preclinical validation of the biologics.

YNCREA / SMMIL-E

STAND D4/8

Website: www.centreoscarlambret.fr/actualites/projets-recherche-laboratoire-smmile

The Chair Digital System & Life Sciences is created to foster the translation of innovative technology in biology and medicine towards original approaches for early diagnosis and patient monitoring for several pathologies. Within Eurasanté, the Chair represents a stimulating ecosystem for start-up development, relying on expertise in BioMEMS (Miniaturized system for biology and health) and Artificial Intelligence. Yncréa and SMMiL-E cross their expertise to launch the chair during Biofit event.

EUROBIOMED

STAND F11

Website: www.eurobiomed.org



Founded in 2009 by regional stakeholders, EUROBIOMED is the Life Science cluster from Southern France. We gather more than 250 innovative biotech and medtech companies, as well as leading research institutes, hospitals and universities. We lead territorial initiatives and help our members businesses and research organisations to innovate, finance, develop and achieve their scientific and business objectives, to ultimately improve the treatment and the lives of patients.

Eurobiomed tops European rankings in all stages of innovation: education, basic, translational and clinical research, technological innovation centers, start-ups and industrial success stories. Some of Eurobiomed main assets are the number of people involved, but also the quality of the network and trust that is established between its members, which reinforces the interactions and facilitates collaborations.

Our missions:

- Develop the Life Sciences network activity in the South of France (Animation of the innovation community, matchmaking and networking between members, organisation of more than 25 scientific and business events each year, advocacy to third parties (public authorities, international stakeholders), etc.).
 - Structuring public-private R&D projects to get funded (Monitoring calls for projects, Identification of public and private partners, Support for project building and financing, Project follow-up until market access).
 - Personalised support for life sciences companies growth (Corporate strategy, Fundraising, Business development and international markets, Regulatory compliance, Industrialisation and production, Acceleration programmes, Open innovation programmes, etc.).
- Our business areas are new therapeutics, medical devices, diagnostics & Imaging and Digital Health.
- Eurobiomed is the leader of the European Diagnostic Cluster Alliance and is the first immunology cluster in Europe.



This year, Eurobiomed joins the BioFIT organisers team to speed up the development of the event. No need to wait for the next edition to meet them, you can now go to the exhibition area, at the stand F11, and discover their activities!



**FOR MANY AN ACTIVE LIFE | OUR SCIENTISTS
STOPS FAR TOO EARLY | WON'T ACCEPT THAT**



By 2050 the world's population over 60 will have doubled to two billion, making age-related illness an even greater challenge for society.

That's why we're seeking to help people stay healthier and more active in later life, be it through more targeted treatments

for cancer and cardiovascular conditions, solutions for eye diseases, or ways to keep those with arthritis moving. Because life shouldn't stop at 60 – not by any means. To find out how our innovations are helping to change lives for the better, visit our website : www.bayer.fr.

Science for a **better life**



Improving lives since 1896.

A tradition of advancing science and medicine. Then, now and in the future.

Contact us with your innovation | www.roche.com/partnering



ORGANISERS



EURASANTÉ

Eurasanté is an incubator, a technology transfer tool and a cluster manager all at once, in the biotech, medtech, nutrition and healthcare fields in Northern France. It helps French and foreign companies, entrepreneurs, scientists and clinicians with their innovations and development projects. The regional network includes more than 1,000 companies working in the Life Sciences and Healthcare fields. The Health field in the Hauts-de-France region has a total of 28,000 employees. Eurasanté also promotes the Eurasanté Bio-business Park which hosts 7 hospitals, 4 universities, 7 specialised schools, 170 companies and 50 laboratories. In addition, Eurasanté organises 4 international partnering events, which aim to increase and improve interactions between academia and the industry.

www.eurasante.com @Eurasante

ORGANISERS



BIOVALLEY FRANCE

BioValley France is a competitiveness cluster which has for mission to federate, develop and promote health players through innovation. The priorities of the cluster are Medicine, Medical Technologies and e-Health. BioValley France actively participates in development projects of the health sector and supports its members in their R&D innovation approaches enabling them to access high national and international added-value expertise (regulatory, clinical studies, etc.). It also contributes to the networking of its members and develops the ecosystem's visibility, in order to boost market access. BioValley France relies on a dynamic network of French, German and Swiss companies to succeed, as well as leading academic and clinical research, and an integrated network of partners that are key players in innovation.

www.biovalley-france.com @BiovalleyFrance



THE NHL CLUSTER

The Nutrition Health Longevity (NHL) Cluster is a dynamic network at the intersection of health, biotechnology and nutrition. The NHL Cluster aims to connect academia and industry partners around R&D projects. It focuses on the fields of prevention and treatment of lifestyle-related diseases, such as metabolic and cardiovascular pathologies, neurodegenerative diseases and inflammatory bowel diseases. Its goal is to gather and support players from the health and food sectors in designing, developing and financing their future products and processes.

www.nhl-cluster.com @PoleNSL



EUROBIOMED

Founded in 2009 by regional stakeholders, EUROBIOMED is the Life Science cluster from Southern France. We gather more than 250 innovative biotech and medtech companies, as well as leading research institutes, hospitals and universities. We lead territorial initiatives and help our members businesses and research organisations to innovate, finance, develop and achieve their scientific and business objectives, to ultimately improve the treatment and the lives of patients. Eurobiomed tops European rankings in all stages of innovation: education, basic, translational and clinical research, technological innovation centers, start-ups and industrial success stories. Some of Eurobiomed main assets are the number of people involved, but also the quality of the network and trust that is established between its members, which reinforces the interactions and facilitates collaborations.

www.eurobiomed.org @PoleEurobiomed

BIOPARTY

COCKTAIL DINNER, NETWORKING, DANCING, PHOTOCALL & CASINO GAMES



DECEMBER 4TH, 2018
FROM 6.30 PM

LE TRIPOSTAL, LILLE



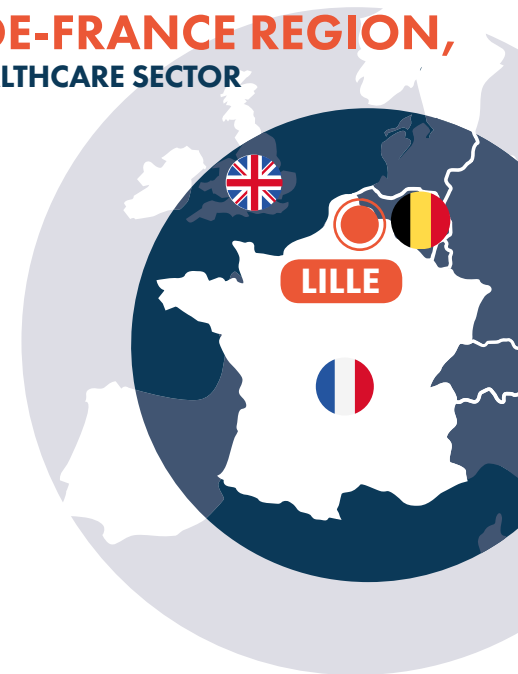
LILLE 2018 - FRANCE

LILLE AND THE HAUTS-DE-FRANCE REGION, A REGION OF EXCELLENCE IN THE HEALTHCARE SECTOR

The Lille Region is the 3rd ranked life sciences cluster in France. The main areas of expertise in the Hauts-de-France region are metabolic diseases, ageing diseases, nutrition and blood related products. The pharma-biotech sector in Northern France enjoys the presence of both big companies (AstraZeneca, Bayer, GSK...), a dense network of innovative start-ups (AlzProtect, ImaBiotech, Innobiochips...) and dynamic mid-size biopharmaceutical companies (Diagast, Genfit, Genoscreen, LFB...).

The pharma-biotech sector in the Hauts-de-France region:

- Export turnover of more than €3 billion
- Regional turnover of €6 billion (11% of the €53 billion national turnover)
- 11,600 jobs (11% of jobs in France in this sector)



MEDIA PARTNERS



| Citigate Dewe Rogerson



SUPPORTERS



SUPPORTERS



SPONSORS

GOLD SPONSOR



SILVER SPONSOR



SPONSORS

BRONZE SPONSORS



CONTRIBUTING SPONSORS



EXHIBITOR LIST & FLOOR PLAN



- 3DNEUROSECURE A3
- A&M LABORATORY GROUP D7
- AFSSI**
- AEPODIA C3/5
- ANTINEO C3/7
- ASSOCIATION FRANÇAISE DES SOCIÉTÉS DE SERVICES C3
- ET D'INNOVATION C3/6
- CILQA SAS C3/3
- DIVERCHIM CDMO C3/9
- DRUGABIUS C3/2
- MITOLOGICS C3/1
- RD-BIOTECH C3/4
- ROOWIN C3/8
- SMALTIS D8
- ALCAMI CORPORATION F2
- ALIRA HEALTH C7
- APOLLO SCIENTIFIC C4
- ATLANPOLE BIOTHERAPIES** B11
- BIOGENOUEST C4
- ID2SANTÉ C4
- POLEPHARMA C4
- BACCINEX SA B6
- BIOPARTNER UK F9
- BLUEREG PHARMA CONSULTING... F10
- CARAKTERS F7
- CITOXLAB B10

- CONSORTIUM FINDMED** C1
- INSTITUT CARNOT CALYM C1
- INSTITUT CARNOT CHIMIE C1
- BALARD CIRMAT C1
- INSTITUT CARNOT CURE C1
- CANCER C1
- INSTITUT CARNOT ICM C1
- INSTITUT CARNOT M.I.N.E.S. C1
- INSTITUT CARNOT PASTEUR MS... C1
- INSTITUT CARNOT QUALIMENT@... C1
- INSTITUT CARNOT SMILES C1
- INSTITUT CARNOT C1
- TN@UPSACLAY C1
- INSTITUT CARNOT VOIR C1
- ET ENTENDRE C1
- TREMPLIN CARNOT12C C1
- TREMPLIN CARNOT IMAGINE C1
- CZECHINVEST B1
- DERMA E4
- ENTERPRISE LITHUANIA E8-F4
- ERDYN CONSULTANTS F6
- EU-JAPAN CENTRE FOR INDUSTRIAL COOPERATION B2
- FGK CLINICAL RESEARCH GMBH... E2
- FIRALIS E5
- GEM FORLAB D9
- GET-INRA TRANSFERT D1
- HIRSCH & PARTNERS A4
- INSERM TRANSFERT A5
- IPAZ D3

- IPSI-DE E11
- LABORATOIRE DE TOXICOLOGIE DE L'INSTITUT PASTEUR DE LILLE F1
- LILLE NORTHERN FRANCE BIOCLUSTER**
- AMYLGEN D4/9
- EURASANTÉ D4
- E-ZYVEC D4/1
- GENOSGREEN D4/7
- HCS PHARMA D4/2
- IMMUNE INSIGHT D4/4
- INBRAIN PHARMA D4/3
- NUTRITION HEALTH LONGEVITY CLUSTER D4
- PAR'IMMUNE D4/5
- XPROCHEM D4/6
- YNCREA / SMMIL-E D4/8
- MÉTAGÉNOPOLIS - INRA D1
- METHYLDTECT APS E10
- MICROSYNTH AG B1
- NEURATRIS B5
- NEURO-SYS E12
- NIC | THE HEALTECH VENTURE BUILDER F14
- NOVA BIOMEDICAL C6
- OPEN R&D LITHUANIA E8-F4
- ORIGINAL PROCESS D6
- PHARMALEX A.R.C. A6
- PICOMTO F13
- PMC ISOICHEM D2
- PORSOIT C8

- R&D DATING FOR ANIMAL HEALTH AND INNOVATION - SIMV**
- INSTITUT CARNOT FRANCE E7-F3
- FUTUR ELEVAGE E7-F3
- SIMV E7-F3
- RÉSEAU SATT**
- AQUITAINE SCIENCE F5
- TRANSFERT F5
- AXLR F5
- IDF INNOV F5
- LINKSIUM F5
- QUEST VALORISATION F5
- PULSALYS F5
- RÉSEAU SATT F5
- SATT NORD F5
- SATT SUD-EST F5
- SALAMANDERU B3
- SCIOMICS GMBH E1
- SOLIADIS D5
- SOTERYAH IP E3
- UNIVERSITY OF BIRMINGHAM B4
- XELL AG B8
- XPRESS BIOLOGICS A2
- ZOETIS E6

- INNOV'AREA | START-UPS**
- DELIVERY | DISCOVERY RESEARCH TOOLS**
- ATLANGRAM ia8
- MIND THE BYTE ia9
- PRODUCTION TOOLS**
- NUMAFERM ia10
- UGISENSE ia12

- DIAGNOSTICS**
- CARMENTIX ia14
- SENCEIT ia15

- THERAPEUTICS - CANCER IMMUNO-ONCOLOGY**
- LIFT BIOSCIENCES ia6
- ODIMMA ia4
- ONCOQR ML GMBH ia2
- OPSYON ia5
- PEPTOMYC S.L. ia3
- TUBULIS ia7

- THERAPEUTICS - OTHER INDICATIONS**
- APIOS ia17
- ELASMOGEN LTD ia1
- MADAM THERAPEUTICS ia18
- MTACT ia13
- OP2LYSIS ia11
- PHYTEAU ia16

SAVE THE DATE



Biofit

FOSTERING
INNOVATION
& TRANSFER

The leading European partnering event
for early-stage deals and investment
rounds in the Life Sciences field

NEW DESTINATION

MARSEILLE

FRANCE

8th edition

DECEMBER
10 & 11
2019

1,200
delegates

35+
countries represented

Organised by:



Institutional partners:

